

Product datasheet for **TA313976**

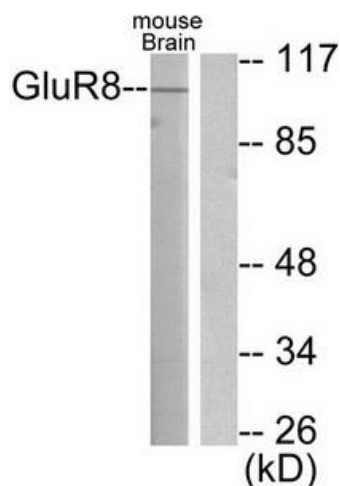
Metabotropic Glutamate Receptor 8 (GRM8) Rabbit Polyclonal Antibody

Product data:

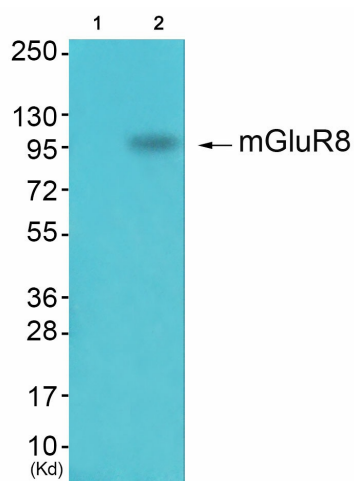
Product Type:	Primary Antibodies
Applications:	IHC, WB
Recommended Dilution:	WB: 1:100~1:1000, IHC: 1:50~1:100, ELISA: 1:10000
Reactivity:	Human, Mouse, Rat
Host:	Rabbit
Isotype:	IgG
Clonality:	Polyclonal
Immunogen:	The antiserum was produced against synthesized peptide derived from human GluR8.
Formulation:	Phosphate buffered saline (without Mg ²⁺ and Ca ²⁺), pH 7.4, 150mM NaCl, 0.02% sodium azide and 50% glycerol.
Concentration:	lot specific
Purification:	The antibody was affinity-purified from rabbit antiserum by affinity-chromatography using epitope-specific immunogen.
Conjugation:	Unconjugated
Storage:	Store at -20°C as received.
Stability:	Stable for 12 months from date of receipt.
Gene Name:	glutamate metabotropic receptor 8
Database Link:	NP_000836 Entrez Gene 14823 Mouse Entrez Gene 60590 Rat Entrez Gene 2918 Human O00222
Synonyms:	GLUR8; GPRC1H; mGlu8; MGLUR8
Note:	GluR8 antibody detects endogenous levels of total GluR8 protein.
Protein Families:	Druggable Genome, GPCR, Transmembrane
Protein Pathways:	Neuroactive ligand-receptor interaction



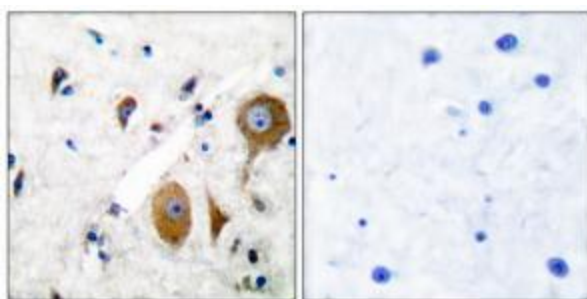
[View online »](#)

Product images:


Western blot analysis of extracts from mouse brain, using GluR8 antibody (#TA313976). The lane on the right is treated with the synthesized peptide.



Western blot analysis of extracts from k562 cells (Lane 2), using mGluR8 Antibody. The lane on the left is treated with synthesized peptide.



Immunohistochemical analysis of paraffin-embedded human brain tissue using GluR8 antibody (#TA313976). The picture on the right is treated with the synthesized peptide.