

## Product datasheet for **TA313975**

### Metabotropic Glutamate Receptor 6 (GRM6) Rabbit Polyclonal Antibody

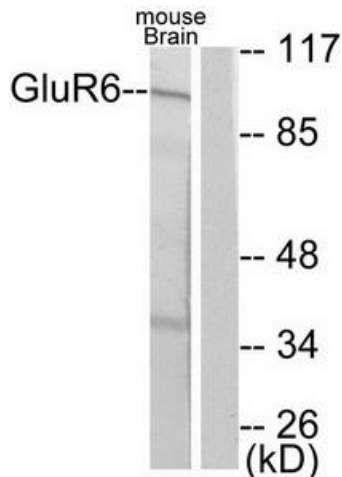
#### Product data:

Product Type:	Primary Antibodies
Applications:	IHC, WB
Recommended Dilution:	WB: 500~1:1000, IHC: 1:50~1:100, ELISA: 1:5000
Reactivity:	Human
Host:	Rabbit
Isotype:	IgG
Clonality:	Polyclonal
Immunogen:	The antiserum was produced against synthesized peptide derived from human GluR6.
Formulation:	Phosphate buffered saline (without Mg <sup>2+</sup> and Ca <sup>2+</sup> ), pH 7.4, 150mM NaCl, 0.02% sodium azide and 50% glycerol.
Concentration:	lot specific
Purification:	The antibody was affinity-purified from rabbit antiserum by affinity-chromatography using epitope-specific immunogen.
Conjugation:	Unconjugated
Storage:	Store at -20°C as received.
Stability:	Stable for 12 months from date of receipt.
Gene Name:	glutamate metabotropic receptor 6
Database Link:	<a href="#">NP_000834</a> <a href="#">Entrez Gene 2916 Human</a> <a href="#">O15303</a>
Synonyms:	CSNB1B; GPRC1F; mGlu6; MGLUR6
Note:	GluR6 antibody detects endogenous levels of total GluR6 protein.
Protein Families:	Druggable Genome, Transmembrane
Protein Pathways:	Neuroactive ligand-receptor interaction

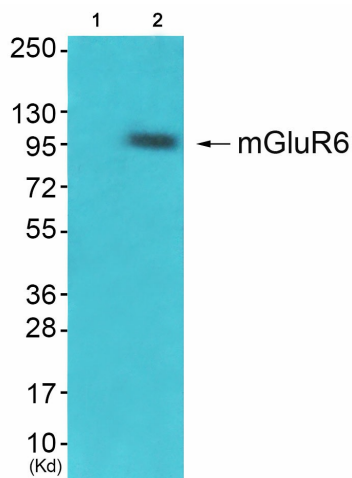


[View online »](#)

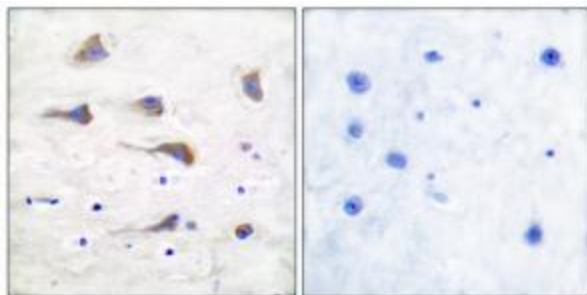
Product images:



Western blot analysis of extracts from mouse brain, using GluR6 antibody (#TA313975). The lane on the right is treated with the synthesized peptide.



Western blot analysis of extracts from HepG2 cells (Lane 2), using mGluR6 Antibody. The lane on the left is treated with synthesized peptide.



Immunohistochemical analysis of paraffin-embedded human brain tissue using GluR6 antibody (#TA313975). The picture on the right is treated with the synthesized peptide.