

## Product datasheet for **TA313973**

### Metabotropic Glutamate Receptor 3 (GRM3) Rabbit Polyclonal Antibody

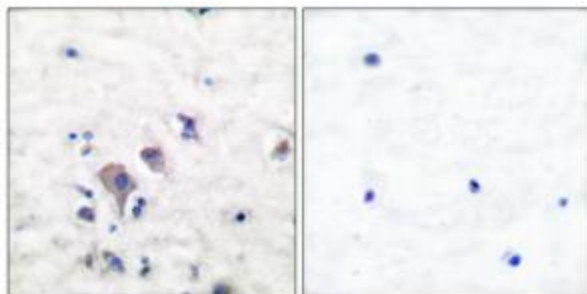
#### Product data:

Product Type:	Primary Antibodies
Applications:	IHC, WB
Recommended Dilution:	WB: 1:500~1:3000, IHC: 1:50~1:100, ELISA: 1:1000
Reactivity:	Human, Mouse, Rat
Host:	Rabbit
Isotype:	IgG
Clonality:	Polyclonal
Immunogen:	The antiserum was produced against synthesized peptide derived from human GluR2/3.
Formulation:	Phosphate buffered saline (without Mg <sup>2+</sup> and Ca <sup>2+</sup> ), pH 7.4, 150mM NaCl, 0.02% sodium azide and 50% glycerol.
Concentration:	lot specific
Purification:	The antibody was affinity-purified from rabbit antiserum by affinity-chromatography using epitope-specific immunogen.
Conjugation:	Unconjugated
Storage:	Store at -20°C as received.
Stability:	Stable for 12 months from date of receipt.
Gene Name:	glutamate metabotropic receptor 3
Database Link:	<a href="#">NP_000831</a> <a href="#">Entrez Gene 24416 Rat</a> <a href="#">Entrez Gene 108069 Mouse</a> <a href="#">Entrez Gene 2913 Human</a> <a href="#">Q14832</a>
Synonyms:	GLUR3; GPRC1C; mGlu3; MGLUR3
Note:	GluR2/3 antibody detects endogenous levels of total GluR2/3 protein.
Protein Families:	Druggable Genome, GPCR, Transmembrane
Protein Pathways:	Neuroactive ligand-receptor interaction

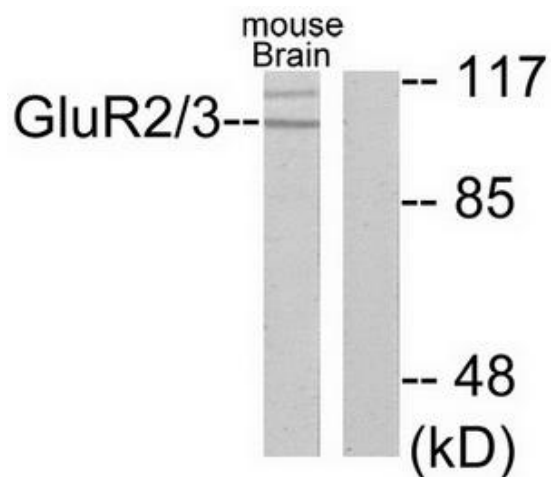


[View online »](#)

## Product images:



Immunohistochemical analysis of paraffin-embedded human brain tissue using GluR2/3 antibody (#TA313973). The picture on the right is treated with the synthesized peptide.



Western blot analysis of extracts from mouse brain, using GluR2/3 antibody (#TA313973). The lane on the right is treated with the synthesized peptide.