

## Product datasheet for **TA313969**

### GRID2 Rabbit Polyclonal Antibody

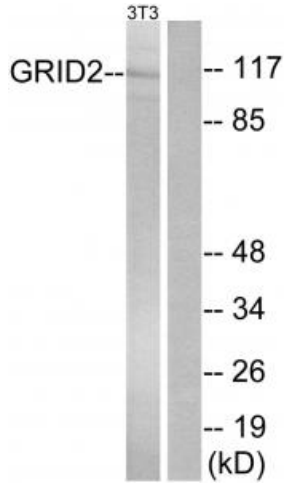
#### Product data:

Product Type:	Primary Antibodies
Applications:	IF, WB
Recommended Dilution:	WB: 1:500~1:3000, IF: 1:100~1:500, ELISA: 1:20000
Reactivity:	Human, Mouse, Rat
Host:	Rabbit
Isotype:	IgG
Clonality:	Polyclonal
Immunogen:	The antiserum was produced against synthesized peptide derived from internal of human GRID2.
Formulation:	Phosphate buffered saline (without Mg <sup>2+</sup> and Ca <sup>2+</sup> ), pH 7.4, 150mM NaCl, 0.02% sodium azide and 50% glycerol.
Concentration:	lot specific
Purification:	The antibody was affinity-purified from rabbit antiserum by affinity-chromatography using epitope-specific immunogen.
Conjugation:	Unconjugated
Storage:	Store at -20°C as received.
Stability:	Stable for 12 months from date of receipt.
Gene Name:	glutamate ionotropic receptor delta type subunit 2
Database Link:	<a href="#">NP_001501</a> <a href="#">Entrez Gene 14804 Mouse</a> <a href="#">Entrez Gene 79220 Rat</a> <a href="#">Entrez Gene 2895 Human</a> <a href="#">O43424</a>
Synonyms:	GluD2; SCAR18
Note:	GRID2 antibody detects endogenous levels of total GRID2 protein.
Protein Families:	Druggable Genome, Ion Channels: Glutamate Receptors, Transmembrane
Protein Pathways:	Long-term depression, Neuroactive ligand-receptor interaction

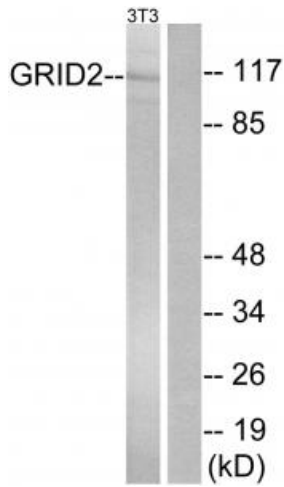


[View online »](#)

Product images:



Western blot analysis of extracts from NIH/3T3 cells, using GRID2 antibody. The lane on the right is treated with the synthesized peptide.



Immunofluorescence analysis of HuvEc cells, using GRID2 antibody. The picture on the right is treated with the synthesized peptide.