

Product datasheet for **TA313965**

Ionotropic Glutamate receptor 2 (GRIA2) Rabbit Polyclonal Antibody

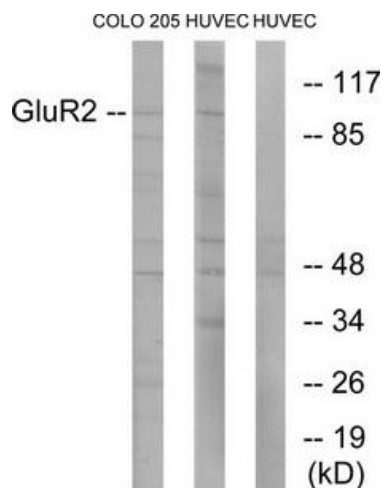
Product data:

Product Type:	Primary Antibodies
Applications:	IHC, WB
Recommended Dilution:	WB: 1:500~1:3000, IHC: 1:50~1:100, ELISA: 1:20000
Reactivity:	Human, Mouse, Rat
Host:	Rabbit
Isotype:	IgG
Clonality:	Polyclonal
Immunogen:	The antiserum was produced against synthesized non-phosphopeptide derived from human Glutamate receptor 2 around the phosphorylation site of serine 880 (I-E-S-V-K).
Formulation:	Phosphate buffered saline (without Mg ²⁺ and Ca ²⁺), pH 7.4, 150mM NaCl, 0.02% sodium azide and 50% glycerol.
Concentration:	lot specific
Purification:	The antibody was affinity-purified from rabbit antiserum by affinity-chromatography using epitope-specific immunogen.
Conjugation:	Unconjugated
Storage:	Store at -20°C as received.
Stability:	Stable for 12 months from date of receipt.
Gene Name:	glutamate ionotropic receptor AMPA type subunit 2
Database Link:	NP_000817 Entrez Gene 14800 MouseEntrez Gene 29627 RatEntrez Gene 2891 Human P42262
Synonyms:	GluA2; GluR-K2; GLUR2; GLURB; HBGR2
Note:	Glutamate receptor 2 (Ab-880) antibody detects endogenous levels of total Glutamate receptor 2 protein.
Protein Families:	Druggable Genome, Ion Channels: Glutamate Receptors, Transmembrane
Protein Pathways:	Amyotrophic lateral sclerosis (ALS), Long-term depression, Long-term potentiation, Neuroactive ligand-receptor interaction

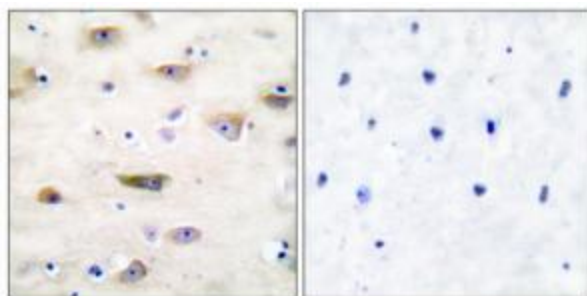


[View online »](#)

Product images:



Western blot analysis of extracts from COLO205/HuvEC cells, using GluR2 (Ab-880) Antibody. The lane on the right is treated with the synthesized peptide.



Immunohistochemistry analysis of paraffin-embedded human brain tissue, using GluR2 (Ab-880) Antibody. The picture on the right is treated with the synthesized peptide.