

Product datasheet for **TA313954**

GPR37 Rabbit Polyclonal Antibody

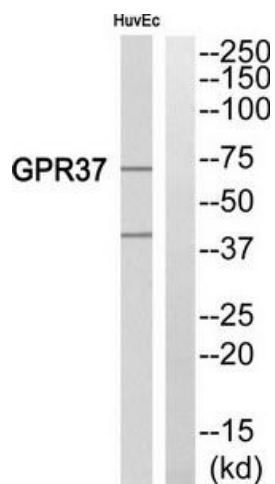
Product data:

Product Type:	Primary Antibodies
Applications:	WB
Recommended Dilution:	WB: 1:500~1:3000, ELISA: 1:10000
Reactivity:	Human, Mouse, Rat
Host:	Rabbit
Isotype:	IgG
Clonality:	Polyclonal
Immunogen:	The antiserum was produced against synthesized peptide derived from internal of human GPR37.
Formulation:	Phosphate buffered saline (without Mg ²⁺ and Ca ²⁺), pH 7.4, 150mM NaCl, 0.02% sodium azide and 50% glycerol.
Purification:	The antibody was affinity-purified from rabbit antiserum by affinity-chromatography using epitope-specific immunogen.
Conjugation:	Unconjugated
Storage:	Store at -20°C as received.
Stability:	Stable for 12 months from date of receipt.
Gene Name:	G protein-coupled receptor 37
Database Link:	NP_005293 Entrez Gene 14763 Mouse Entrez Gene 117549 Rat Entrez Gene 2861 Human O15354
Synonyms:	EDNRBL; hET(B)R-LP; PAELR
Note:	GPR37 antibody detects endogenous levels of total GPR37 protein.
Protein Families:	Druggable Genome, GPCR, Transmembrane
Protein Pathways:	Parkinson's disease



[View online »](#)

Product images:



Western blot analysis of extracts from HuvEc cells, using GPR37 antibody. The lane on the right is treated with the synthesized peptide.