

## Product datasheet for **TA313953**

### GPR35 Rabbit Polyclonal Antibody

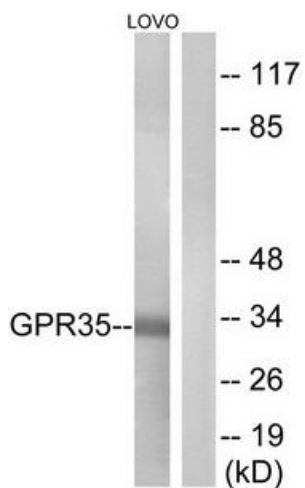
#### Product data:

Product Type:	Primary Antibodies
Applications:	IF, WB
Recommended Dilution:	WB: 1:500~1:3000, IF: 1:100~1:500, ELISA: 1:20000
Reactivity:	Human
Host:	Rabbit
Isotype:	IgG
Clonality:	Polyclonal
Immunogen:	The antiserum was produced against synthesized peptide derived from internal of human GPR35.
Formulation:	Phosphate buffered saline (without Mg <sup>2+</sup> and Ca <sup>2+</sup> ), pH 7.4, 150mM NaCl, 0.02% sodium azide and 50% glycerol.
Concentration:	lot specific
Purification:	The antibody was affinity-purified from rabbit antiserum by affinity-chromatography using epitope-specific immunogen.
Conjugation:	Unconjugated
Storage:	Store at -20°C as received.
Stability:	Stable for 12 months from date of receipt.
Gene Name:	G protein-coupled receptor 35
Database Link:	<a href="#">NP_001182310</a> <a href="#">Entrez Gene 2859 Human</a> <a href="#">Q9HC97</a>
Synonyms:	KPG_007
Note:	GPR35 antibody detects endogenous levels of total GPR35 protein.
Protein Families:	Druggable Genome, GPCR, Transmembrane
Protein Pathways:	Neuroactive ligand-receptor interaction

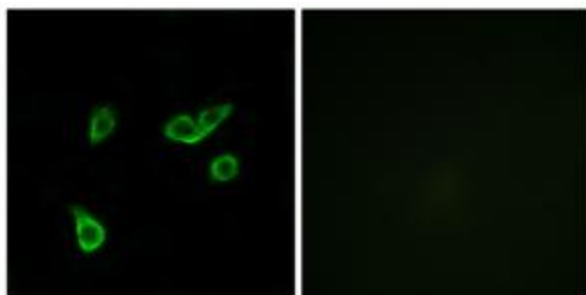


[View online »](#)

## Product images:



Western blot analysis of extracts from LOVO cells, using GPR35 antibody. The lane on the right is treated with the synthesized peptide.



Immunofluorescence analysis of A549 cells, using GPR35 antibody. The picture on the right is treated with the synthesized peptide.