

## Product datasheet for **TA313949**

### GPR27 Rabbit Polyclonal Antibody

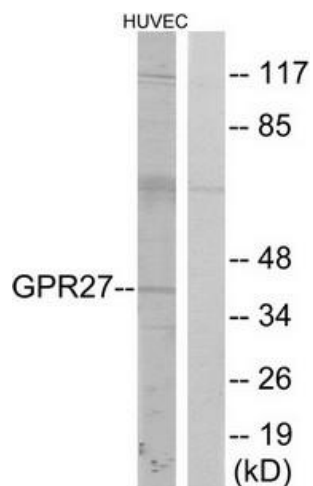
#### Product data:

Product Type:	Primary Antibodies
Applications:	IF, WB
Recommended Dilution:	WB: 1:500~1:3000, IF: 1:100~1:500, ELISA: 1:10000
Reactivity:	Human, Mouse, Rat
Host:	Rabbit
Isotype:	IgG
Clonality:	Polyclonal
Immunogen:	The antiserum was produced against synthesized peptide derived from internal of human GPR27.
Formulation:	Phosphate buffered saline (without Mg <sup>2+</sup> and Ca <sup>2+</sup> ), pH 7.4, 150mM NaCl, 0.02% sodium azide and 50% glycerol.
Concentration:	lot specific
Purification:	The antibody was affinity-purified from rabbit antiserum by affinity-chromatography using epitope-specific immunogen.
Conjugation:	Unconjugated
Storage:	Store at -20°C as received.
Stability:	Stable for 12 months from date of receipt.
Gene Name:	G protein-coupled receptor 27
Database Link:	<a href="#">NP_061844</a> <a href="#">Entrez Gene 14761 Mouse</a> <a href="#">Entrez Gene 65275 Rat</a> <a href="#">Entrez Gene 2850 Human</a> <a href="#">Q9NS67</a>
Synonyms:	SREB1
Note:	GPR27 antibody detects endogenous levels of total GPR27 protein.
Protein Families:	Druggable Genome, GPCR, Transmembrane

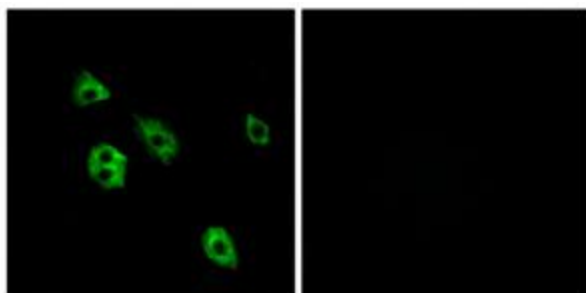


[View online »](#)

## Product images:



Western blot analysis of extracts from HUVEC cells, using GPR27 antibody. The lane on the right is treated with the synthesized peptide.



Immunofluorescence analysis of A549 cells, using GPR27 antibody. The picture on the right is treated with the synthesized peptide.