

Product datasheet for **TA313946**

GPR20 Rabbit Polyclonal Antibody

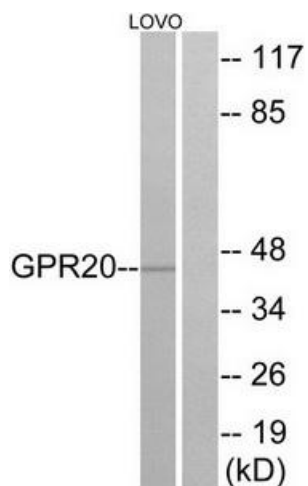
Product data:

Product Type:	Primary Antibodies
Applications:	IF, IHC, WB
Recommended Dilution:	WB: 1:500~1:3000, IHC: 1:50~1:100, IF: 1:100~1:500, ELISA: 1:1000
Reactivity:	Human
Host:	Rabbit
Isotype:	IgG
Clonality:	Polyclonal
Immunogen:	The antiserum was produced against synthesized peptide derived from internal of human GPR20.
Formulation:	Phosphate buffered saline (without Mg ²⁺ and Ca ²⁺), pH 7.4, 150mM NaCl, 0.02% sodium azide and 50% glycerol.
Concentration:	lot specific
Purification:	The antibody was affinity-purified from rabbit antiserum by affinity-chromatography using epitope-specific immunogen.
Conjugation:	Unconjugated
Storage:	Store at -20°C as received.
Stability:	Stable for 12 months from date of receipt.
Gene Name:	G protein-coupled receptor 20
Database Link:	NP_005284 Entrez Gene 2843 Human Q99678
Synonyms:	G protein-coupled receptor 20
Note:	GPR20 antibody detects endogenous levels of total GPR20 protein.
Protein Families:	Druggable Genome, GPCR, Transmembrane

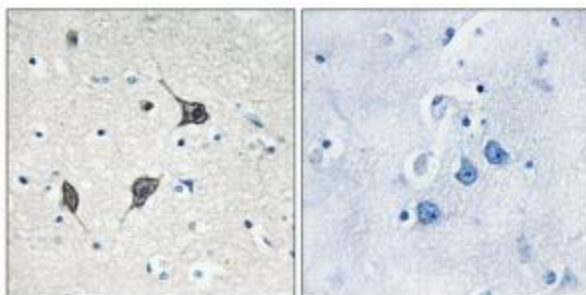


[View online »](#)

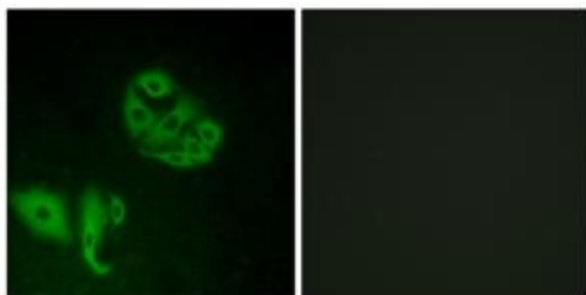
Product images:



Western blot analysis of extracts from LOVO cells, using GPR20 antibody. The lane on the right is treated with the synthesized peptide.



Immunohistochemistry analysis of paraffin-embedded human brain tissue using GPR20 antibody. The picture on the right is treated with the synthesized peptide.



Immunofluorescence analysis of A549 cells, using GPR20 antibody. The picture on the right is treated with the synthesized peptide.