

Product datasheet for **TA313941**

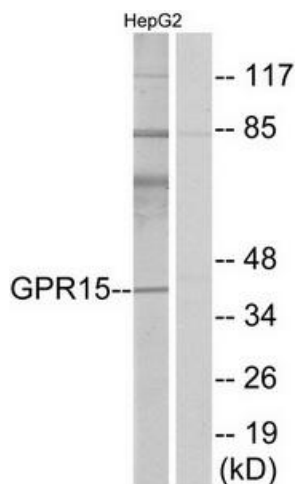
GPR15 Rabbit Polyclonal Antibody

Product data:

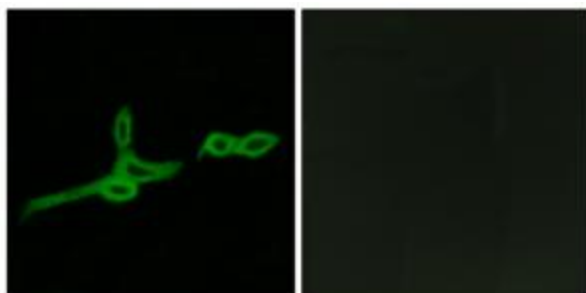
Product Type:	Primary Antibodies
Applications:	IF, WB
Recommended Dilution:	WB: 1:500~1:3000, IF: 1:100~1:500, ELISA: 1:10000
Reactivity:	Human, Mouse
Host:	Rabbit
Isotype:	IgG
Clonality:	Polyclonal
Immunogen:	The antiserum was produced against synthesized peptide derived from internal of human GPR15.
Formulation:	Phosphate buffered saline (without Mg ²⁺ and Ca ²⁺), pH 7.4, 150mM NaCl, 0.02% sodium azide and 50% glycerol.
Concentration:	lot specific
Purification:	The antibody was affinity-purified from rabbit antiserum by affinity-chromatography using epitope-specific immunogen.
Conjugation:	Unconjugated
Storage:	Store at -20°C as received.
Stability:	Stable for 12 months from date of receipt.
Gene Name:	G protein-coupled receptor 15
Database Link:	NP_005281 Entrez Gene 71223 Mouse Entrez Gene 2838 Human P49685
Synonyms:	BOB
Note:	GPR15 antibody detects endogenous levels of total GPR15 protein.
Protein Families:	Druggable Genome, GPCR, Transmembrane



[View online »](#)

Product images:


Western blot analysis of extracts from HepG2 cells, using GPR15 antibody. The lane on the right is treated with the synthesized peptide.



Immunofluorescence analysis of LOVO cells, using GPR15 antibody. The picture on the right is treated with the synthesized peptide.