

Product datasheet for **TA313938**

CXCR3 Rabbit Polyclonal Antibody

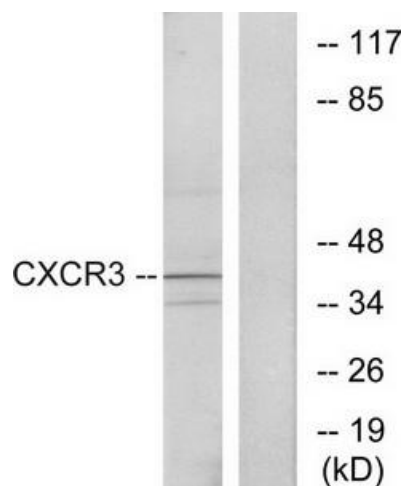
Product data:

Product Type:	Primary Antibodies
Applications:	WB
Recommended Dilution:	WB: 1:500~1:3000, ELISA: 1:5000
Reactivity:	Human
Host:	Rabbit
Isotype:	IgG
Clonality:	Polyclonal
Immunogen:	The antiserum was produced against synthesized peptide derived from internal of human CXCR3.
Formulation:	Phosphate buffered saline (without Mg ²⁺ and Ca ²⁺), pH 7.4, 150mM NaCl, 0.02% sodium azide and 50% glycerol.
Concentration:	lot specific
Purification:	The antibody was affinity-purified from rabbit antiserum by affinity-chromatography using epitope-specific immunogen.
Conjugation:	Unconjugated
Storage:	Store at -20°C as received.
Stability:	Stable for 12 months from date of receipt.
Gene Name:	C-X-C motif chemokine receptor 3
Database Link:	NP_001136269 Entrez Gene 2833 Human P49682
Synonyms:	CD182; CD183; CKR-L2; CMKAR3; GPR9; IP10-R; Mig-R; MigR
Note:	CXCR3 antibody detects endogenous levels of total CXCR3 protein.
Protein Families:	Druggable Genome, GPCR, Transmembrane
Protein Pathways:	Chemokine signaling pathway, Cytokine-cytokine receptor interaction



[View online »](#)

Product images:



Western blot analysis of extracts from K562 cells, using CXCR3 antibody. The lane on the right is treated with the synthesized peptide.