

Product datasheet for **TA313934**

GNAZ Rabbit Polyclonal Antibody

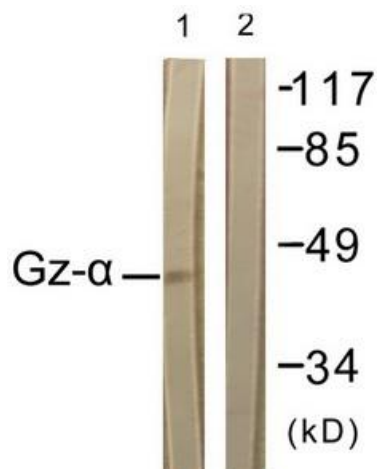
Product data:

Product Type:	Primary Antibodies
Applications:	IHC, WB
Recommended Dilution:	WB: 1:500~1:3000, IHC: 1:50~1:100, ELISA: 1:5000
Reactivity:	Human, Mouse
Host:	Rabbit
Isotype:	IgG
Clonality:	Polyclonal
Immunogen:	The antiserum was produced against synthesized non-phosphopeptide derived from human Gz-a around the phosphorylation site of serine 16 (R-R-SP-R-R).
Formulation:	Phosphate buffered saline (without Mg ²⁺ and Ca ²⁺), pH 7.4, 150mM NaCl, 0.02% sodium azide and 50% glycerol.
Concentration:	lot specific
Purification:	The antibody was affinity-purified from rabbit antiserum by affinity-chromatography using epitope-specific immunogen.
Conjugation:	Unconjugated
Storage:	Store at -20°C as received.
Stability:	Stable for 12 months from date of receipt.
Gene Name:	G protein subunit alpha z
Database Link:	NP_002064 Entrez Gene 14687 Mouse Entrez Gene 2781 Human P19086
Synonyms:	alpha z polypeptide; guanine nucleotide binding protein; guanine nucleotide binding protein (G protein); transducin alpha
Note:	Gz-. (Ab-16) antibody detects endogenous levels of total Gz-. protein.
Protein Families:	Druggable Genome
Protein Pathways:	Long-term depression

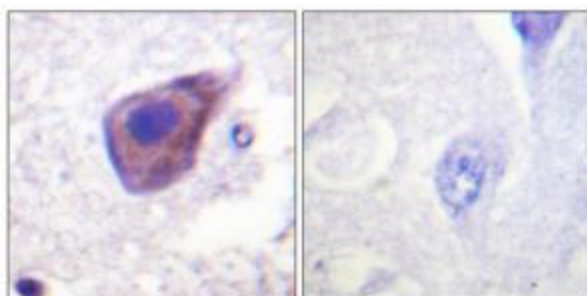


[View online »](#)

Product images:



Western blot analysis of extracts from HuvEc cells, using Gz-a (Ab-16) antibody. The lane on the right is treated with the synthesized peptide.



Immunohistochemistry analysis of paraffin-embedded human brain tissue using Gz-a (Ab-16) antibody. The picture on the right is treated with the synthesized peptide.