

Product datasheet for **TA313926**

Glycerol kinase (GK) Rabbit Polyclonal Antibody

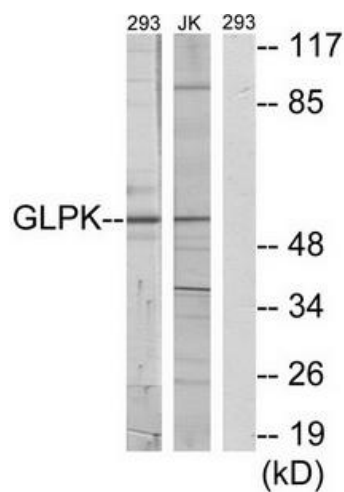
Product data:

Product Type:	Primary Antibodies
Applications:	IF, WB
Recommended Dilution:	WB: 1:500~1:3000, IF: 1:100~1:500, ELISA: 1:20000
Reactivity:	Human, Mouse, Rat
Host:	Rabbit
Isotype:	IgG
Clonality:	Polyclonal
Immunogen:	The antiserum was produced against synthesized peptide derived from C-terminal of human GLPK.
Formulation:	Phosphate buffered saline (without Mg ²⁺ and Ca ²⁺), pH 7.4, 150mM NaCl, 0.02% sodium azide and 50% glycerol.
Concentration:	lot specific
Purification:	The antibody was affinity-purified from rabbit antiserum by affinity-chromatography using epitope-specific immunogen.
Conjugation:	Unconjugated
Storage:	Store at -20°C as received.
Stability:	Stable for 12 months from date of receipt.
Gene Name:	glycerol kinase
Database Link:	NP_000158 Entrez Gene 14933 Mouse Entrez Gene 79223 Rat Entrez Gene 2710 Human P32189
Synonyms:	GK1; GKD
Note:	GLPK antibody detects endogenous levels of total GLPK protein.
Protein Families:	Druggable Genome
Protein Pathways:	Glycerolipid metabolism, Metabolic pathways, PPAR signaling pathway

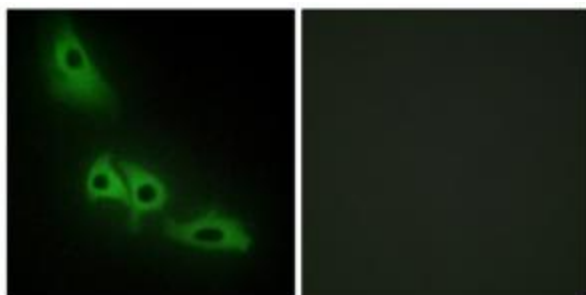


[View online »](#)

Product images:



Western blot analysis of extracts from 293 cells and Jurkat cells, using GLPK antibody. The lane on the right is treated with the synthesized peptide.



Immunofluorescence analysis of HeLa cells, using GLPK antibody. The picture on the right is treated with the synthesized peptide.