

## Product datasheet for **TA313923**

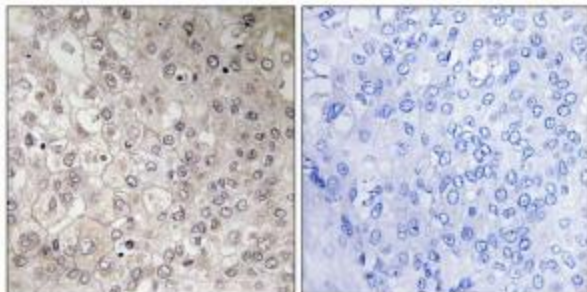
### Gastric Inhibitory Polypeptide Receptor (GIPR) Rabbit Polyclonal Antibody

#### Product data:

Product Type:	Primary Antibodies
Applications:	IF, IHC
Recommended Dilution:	IHC: 1:50~1:100, IF: 1:100~1:500, ELISA: 1:20000
Reactivity:	Human
Host:	Rabbit
Isotype:	IgG
Clonality:	Polyclonal
Immunogen:	The antiserum was produced against synthesized peptide derived from internal of human GIPR.
Formulation:	Phosphate buffered saline (without Mg <sup>2+</sup> and Ca <sup>2+</sup> ), pH 7.4, 150mM NaCl, 0.02% sodium azide and 50% glycerol.
Concentration:	lot specific
Purification:	The antibody was affinity-purified from rabbit antiserum by affinity-chromatography using epitope-specific immunogen.
Conjugation:	Unconjugated
Storage:	Store at -20°C as received.
Stability:	Stable for 12 months from date of receipt.
Gene Name:	gastric inhibitory polypeptide receptor
Database Link:	<a href="#">NP_000155</a> <a href="#">Entrez Gene 2696 Human</a> <a href="#">P48546</a>
Synonyms:	PGQTL2
Note:	GIPR antibody detects endogenous levels of total GIPR protein.
Protein Families:	Druggable Genome, GPCR, Transmembrane
Protein Pathways:	Neuroactive ligand-receptor interaction



[View online »](#)

**Product images:**

Immunohistochemistry analysis of paraffin-embedded human liver carcinoma tissue using GIPR antibody. The picture on the right is treated with the synthesized peptide.



Immunofluorescence analysis of MCF-7 cells, using GIPR antibody. The picture on the right is treated with the synthesized peptide.