

Product datasheet for **TA313920**

B4GALT1 Rabbit Polyclonal Antibody

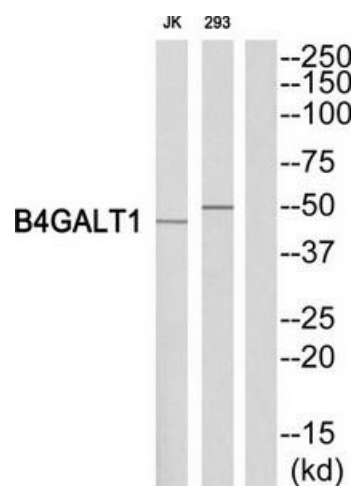
Product data:

Product Type:	Primary Antibodies
Applications:	WB
Recommended Dilution:	WB: 1:500~1:3000, ELISA: 1:20000
Reactivity:	Human, Mouse
Host:	Rabbit
Isotype:	IgG
Clonality:	Polyclonal
Immunogen:	The antiserum was produced against synthesized peptide derived from C-terminal of human B4GALT1.
Formulation:	Phosphate buffered saline (without Mg ²⁺ and Ca ²⁺), pH 7.4, 150mM NaCl, 0.02% sodium azide and 50% glycerol.
Concentration:	lot specific
Purification:	The antibody was affinity-purified from rabbit antiserum by affinity-chromatography using epitope-specific immunogen.
Conjugation:	Unconjugated
Storage:	Store at -20°C as received.
Stability:	Stable for 12 months from date of receipt.
Gene Name:	beta-1,4-galactosyltransferase 1
Database Link:	NP_001488 Entrez Gene 14595 Mouse Entrez Gene 2683 Human P15291
Synonyms:	B4GAL-T1; beta4Gal-T1; CDG2D; GGTB2; GT1; GTB
Note:	B4GALT1 antibody detects endogenous levels of total B4GALT1 protein.
Protein Families:	Druggable Genome, Transmembrane
Protein Pathways:	Galactose metabolism, Glycosphingolipid biosynthesis - lacto and neolacto series, Keratan sulfate biosynthesis, Metabolic pathways, N-Glycan biosynthesis



[View online »](#)

Product images:



Western blot analysis of extracts from Jurkat/293 cells, using B4GALT1 antibody. The lane on the right is treated with the synthesized peptide.