

Product datasheet for **TA313919**

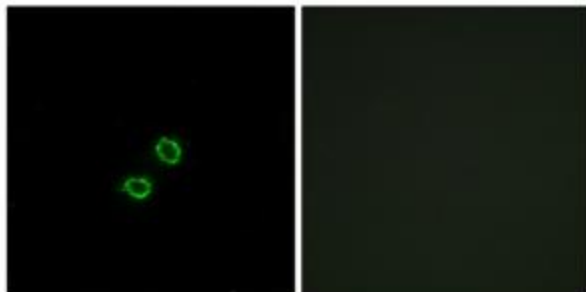
KIR2DL5B Rabbit Polyclonal Antibody

Product data:

Product Type:	Primary Antibodies
Applications:	IF
Recommended Dilution:	IF: 1:100~1:500, ELISA: 1:10000
Reactivity:	Human
Host:	Rabbit
Isotype:	IgG
Clonality:	Polyclonal
Immunogen:	The antiserum was produced against synthesized peptide derived from internal of human KIR2DL5B.
Formulation:	Phosphate buffered saline (without Mg ²⁺ and Ca ²⁺), pH 7.4, 150mM NaCl, 0.02% sodium azide and 50% glycerol.
Concentration:	lot specific
Purification:	The antibody was affinity-purified from rabbit antiserum by affinity-chromatography using epitope-specific immunogen.
Conjugation:	Unconjugated
Storage:	Store at -20°C as received.
Stability:	Stable for 12 months from date of receipt.
Gene Name:	killer cell immunoglobulin like receptor, two Ig domains and long cytoplasmic tail 5B
Database Link:	NP_001018091 Entrez Gene 553128 Human
Synonyms:	KIR2DL5; KIR2DL5.2; KIR2DLX
Note:	KIR2DL5B antibody detects endogenous levels of total KIR2DL5B protein.
Protein Families:	Transmembrane



[View online »](#)

Product images:

Immunofluorescence analysis of A549 cells, using KIR2DL5B antibody. The picture on the right is treated with the synthesized peptide.