

Product datasheet for **TA313918**

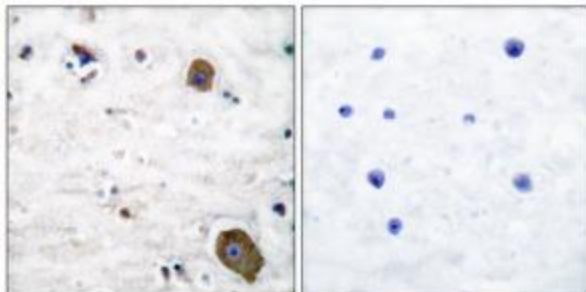
GDNF Receptor alpha 1 (GFRA1) Rabbit Polyclonal Antibody

Product data:

| | |
|-----------------------|---|
| Product Type: | Primary Antibodies |
| Applications: | IHC |
| Recommended Dilution: | IHC: 1:50~1:100, ELISA: 1:1000 |
| Reactivity: | Human, Mouse, Rat |
| Host: | Rabbit |
| Isotype: | IgG |
| Clonality: | Polyclonal |
| Immunogen: | The antiserum was produced against synthesized peptide derived from human GFR a-1. |
| Formulation: | Phosphate buffered saline (without Mg ²⁺ and Ca ²⁺), pH 7.4, 150mM NaCl, 0.02% sodium azide and 50% glycerol. |
| Concentration: | lot specific |
| Purification: | The antibody was affinity-purified from rabbit antiserum by affinity-chromatography using epitope-specific immunogen. |
| Conjugation: | Unconjugated |
| Storage: | Store at -20°C as received. |
| Stability: | Stable for 12 months from date of receipt. |
| Gene Name: | GDNF family receptor alpha 1 |
| Database Link: | NP_665736 Entrez Gene 14585 Mouse Entrez Gene 25454 Rat Entrez Gene 2674 Human P56159 |
| Synonyms: | GDNFR; GDNFRA; GFR-ALPHA-1; RET1L; RETL1; TRNR1 |
| Note: | GFR .-1 antibody detects endogenous levels of total GFR .-1 protein. |
| Protein Families: | Druggable Genome |



[View online »](#)

Product images:

Immunohistochemical analysis of paraffin-embedded human brain tissue, using GFR a-1 antibody. The picture on the right is treated with the synthesized peptide.