

Product datasheet for **TA313915**

Glucagon Receptor (GCGR) Rabbit Polyclonal Antibody

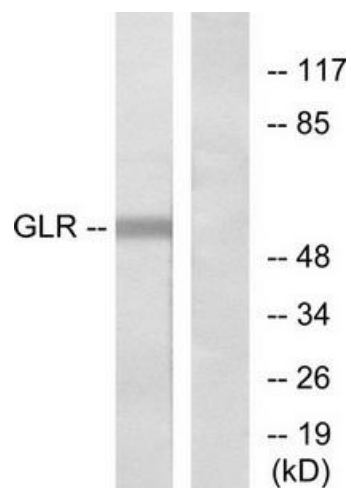
Product data:

| | |
|-----------------------|---|
| Product Type: | Primary Antibodies |
| Applications: | IF, WB |
| Recommended Dilution: | WB: 1:500~1:3000, IF: 1:100~1:500, ELISA: 1:1000 |
| Reactivity: | Human, Mouse, Rat |
| Host: | Rabbit |
| Isotype: | IgG |
| Clonality: | Polyclonal |
| Immunogen: | The antiserum was produced against synthesized peptide derived from internal of human GLR. |
| Formulation: | Phosphate buffered saline (without Mg ²⁺ and Ca ²⁺), pH 7.4, 150mM NaCl, 0.02% sodium azide and 50% glycerol. |
| Concentration: | lot specific |
| Purification: | The antibody was affinity-purified from rabbit antiserum by affinity-chromatography using epitope-specific immunogen. |
| Conjugation: | Unconjugated |
| Storage: | Store at -20°C as received. |
| Stability: | Stable for 12 months from date of receipt. |
| Gene Name: | glucagon receptor |
| Database Link: | NP_000151 Entrez Gene 14527 Mouse Entrez Gene 24953 Rat Entrez Gene 2642 Human P47871 |
| Synonyms: | GGR; GL-R |
| Note: | GLR antibody detects endogenous levels of total GLR protein. |
| Protein Families: | Druggable Genome, GPCR, Transmembrane |
| Protein Pathways: | Neuroactive ligand-receptor interaction |

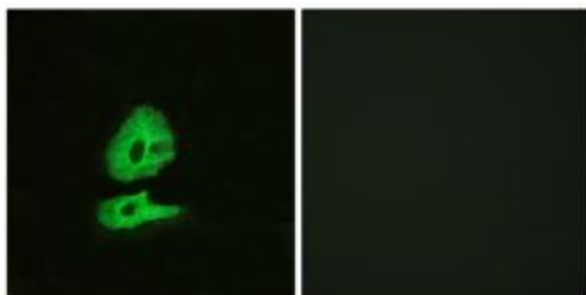


[View online »](#)

Product images:



Western blot analysis of extracts from COLO205 cells, using GLR antibody. The lane on the right is treated with the synthesized peptide.



Immunofluorescence analysis of HeLa cells, using GLR antibody. The picture on the right is treated with the synthesized peptide.