

Product datasheet for **TA313913**

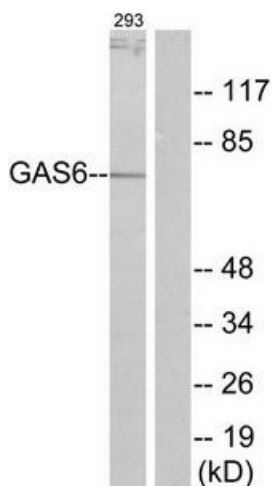
GAS 6 (GAS6) Rabbit Polyclonal Antibody

Product data:

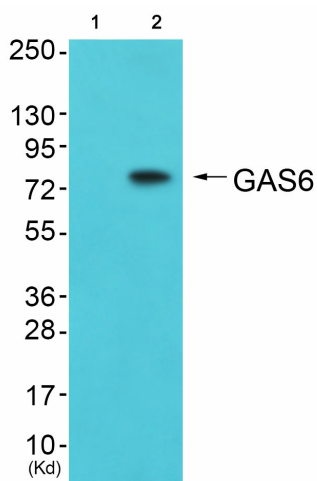
Product Type:	Primary Antibodies
Applications:	IHC, WB
Recommended Dilution:	WB: 1:500~1:3000, IHC: 1:50~1:100, ELISA: 1:40000
Reactivity:	Human
Host:	Rabbit
Isotype:	IgG
Clonality:	Polyclonal
Immunogen:	The antiserum was produced against synthesized peptide derived from internal of human GAS6.
Formulation:	Phosphate buffered saline (without Mg ²⁺ and Ca ²⁺), pH 7.4, 150mM NaCl, 0.02% sodium azide and 50% glycerol.
Concentration:	lot specific
Purification:	The antibody was affinity-purified from rabbit antiserum by affinity-chromatography using epitope-specific immunogen.
Conjugation:	Unconjugated
Storage:	Store at -20°C as received.
Stability:	Stable for 12 months from date of receipt.
Gene Name:	growth arrest specific 6
Database Link:	NP_000811 Entrez Gene 2621 Human Q14393
Synonyms:	AXLLG; AXSF
Note:	GAS6 antibody detects endogenous levels of total GAS6 protein.
Protein Families:	Druggable Genome, Secreted Protein



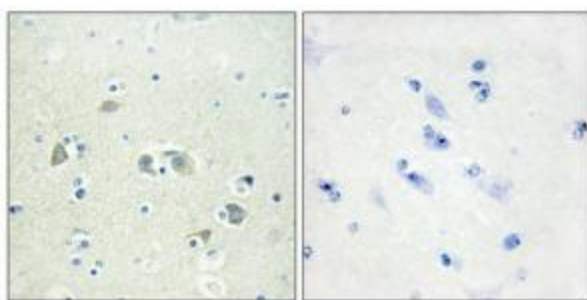
[View online »](#)

Product images:


Western blot analysis of extracts from 293 cells, using GAS6 antibody. The lane on the right is treated with the synthesized peptide.



Western blot analysis of extracts from 293 cells (Lane 2), using GAS6 Antibody. The lane on the left is treated with synthesized peptide.



Immunohistochemistry analysis of paraffin-embedded human brain tissue using GAS6 antibody. The picture on the right is treated with the synthesized peptide.