

Product datasheet for **TA313911**

GALK1 Rabbit Polyclonal Antibody

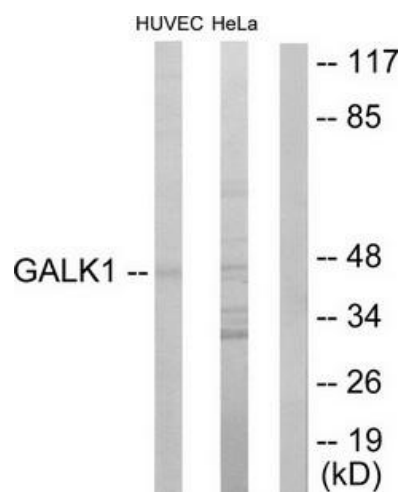
Product data:

Product Type:	Primary Antibodies
Applications:	WB
Recommended Dilution:	WB: 1:500~1:3000, ELISA: 1:10000
Reactivity:	Human, Mouse, Rat
Host:	Rabbit
Isotype:	IgG
Clonality:	Polyclonal
Immunogen:	The antiserum was produced against synthesized peptide derived from N-terminal of human GALK1.
Formulation:	Phosphate buffered saline (without Mg ²⁺ and Ca ²⁺), pH 7.4, 150mM NaCl, 0.02% sodium azide and 50% glycerol.
Concentration:	lot specific
Purification:	The antibody was affinity-purified from rabbit antiserum by affinity-chromatography using epitope-specific immunogen.
Conjugation:	Unconjugated
Storage:	Store at -20°C as received.
Stability:	Stable for 12 months from date of receipt.
Gene Name:	galactokinase 1
Database Link:	NP_000145 Entrez Gene 14635 Mouse Entrez Gene 287835 Rat Entrez Gene 2584 Human P51570
Synonyms:	GALK; GK1; HEL-S-19
Note:	GALK1 antibody detects endogenous levels of total GALK1 protein.
Protein Families:	Druggable Genome
Protein Pathways:	Amino sugar and nucleotide sugar metabolism, Galactose metabolism, Metabolic pathways



[View online »](#)

Product images:



Western blot analysis of extracts from HUVEC cells and HeLa cells, using GALK1 antibody. The lane on the right is treated with the synthesized peptide.