

Product datasheet for **TA313908**

GABA A Receptor gamma 1 (GABRG1) Rabbit Polyclonal Antibody

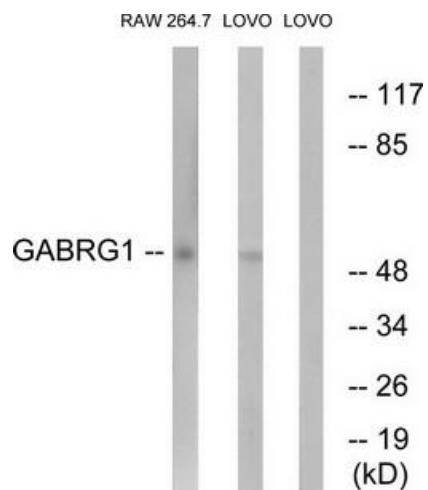
Product data:

Product Type:	Primary Antibodies
Applications:	WB
Recommended Dilution:	WB: 1:500~1:3000, ELISA: 1:20000
Reactivity:	Human, Mouse, Rat
Host:	Rabbit
Isotype:	IgG
Clonality:	Polyclonal
Immunogen:	The antiserum was produced against synthesized peptide derived from internal of human GABRG1.
Formulation:	Phosphate buffered saline (without Mg ²⁺ and Ca ²⁺), pH 7.4, 150mM NaCl, 0.02% sodium azide and 50% glycerol.
Concentration:	lot specific
Purification:	The antibody was affinity-purified from rabbit antiserum by affinity-chromatography using epitope-specific immunogen.
Conjugation:	Unconjugated
Storage:	Store at -20°C as received.
Stability:	Stable for 12 months from date of receipt.
Gene Name:	gamma-aminobutyric acid type A receptor gamma1 subunit
Database Link:	NP_775807 Entrez Gene 14405 Mouse Entrez Gene 140674 Rat Entrez Gene 2565 Human Q8N1C3
Synonyms:	DKFZp686H2042; MGC33838
Note:	GABRG1 antibody detects endogenous levels of total GABRG1 protein.
Protein Families:	Druggable Genome, Ion Channels: Cys-loop Receptors, Transmembrane
Protein Pathways:	Neuroactive ligand-receptor interaction



[View online »](#)

Product images:



Western blot analysis of extracts from RAW264.7 cells and LOVO cells, using GABRG1 antibody. The lane on the right is treated with the synthesized peptide.