

## Product datasheet for **TA313903**

### GABA B Receptor 1 (GABBR1) Rabbit Polyclonal Antibody

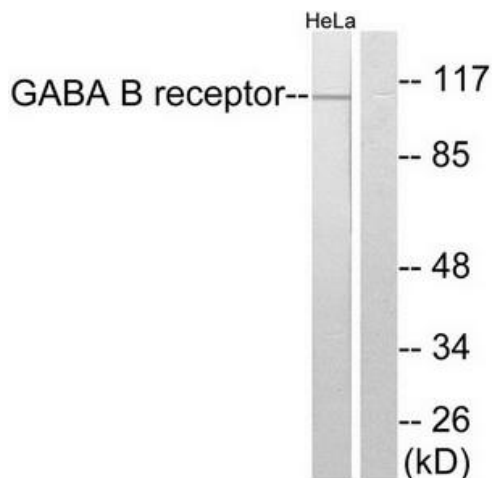
#### Product data:

Product Type:	Primary Antibodies
Applications:	IHC, WB
Recommended Dilution:	WB: 1:500~1:3000, IHC: 1:50~1:100, ELISA: 1:5000
Reactivity:	Human, Mouse, Rat
Host:	Rabbit
Isotype:	IgG
Clonality:	Polyclonal
Immunogen:	The antiserum was produced against synthesized peptide derived from human GABA B receptor.
Formulation:	Phosphate buffered saline (without Mg <sup>2+</sup> and Ca <sup>2+</sup> ), pH 7.4, 150mM NaCl, 0.02% sodium azide and 50% glycerol.
Concentration:	lot specific
Purification:	The antibody was affinity-purified from rabbit antiserum by affinity-chromatography using epitope-specific immunogen.
Conjugation:	Unconjugated
Storage:	Store at -20°C as received.
Stability:	Stable for 12 months from date of receipt.
Gene Name:	gamma-aminobutyric acid type B receptor subunit 1
Database Link:	<a href="#">NP_001461</a> <a href="#">Entrez Gene 54393 Mouse</a> <a href="#">Entrez Gene 81657 Rat</a> <a href="#">Entrez Gene 2550 Human</a> <a href="#">Q9UBS5</a>
Synonyms:	GABABR1; GABBR1-3; GB1; GPRC3A
Note:	GABA B Receptor antibody detects endogenous levels of total GABA B Receptor protein.
Protein Families:	Druggable Genome, GPCR, Secreted Protein, Transmembrane
Protein Pathways:	Neuroactive ligand-receptor interaction

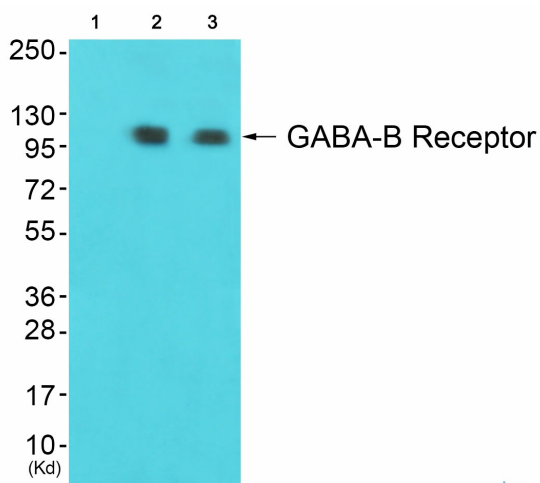


[View online »](#)

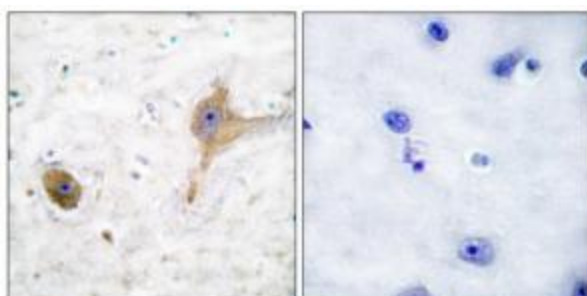
Product images:



Western blot analysis of extracts from HeLa cells, using GABA B Receptor antibody. The lane on the right is treated with the synthesized peptide.



Western blot analysis of extracts from JK cells (Lane 2) and A549 cells (Lane 3), using GABA-B Receptor Antibody. The lane on the left is treated with synthesized peptide.



Immunohistochemical analysis of paraffin-embedded human brain tissue using GABA B Receptor antibody. The picture on the right is treated with the synthesized peptide.