

Product datasheet for **TA313902**

GABA B Receptor 1 (GABBR1) Rabbit Polyclonal Antibody

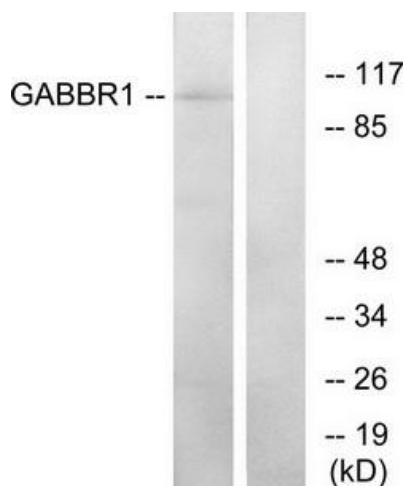
Product data:

Product Type:	Primary Antibodies
Applications:	IF, WB
Recommended Dilution:	WB: 1:500~1:3000, IF: 1:100~1:500, ELISA: 1:1000
Reactivity:	Human, Mouse, Rat
Host:	Rabbit
Isotype:	IgG
Clonality:	Polyclonal
Immunogen:	The antiserum was produced against synthesized peptide derived from internal of human GABBR1.
Formulation:	Phosphate buffered saline (without Mg ²⁺ and Ca ²⁺), pH 7.4, 150mM NaCl, 0.02% sodium azide and 50% glycerol.
Concentration:	lot specific
Purification:	The antibody was affinity-purified from rabbit antiserum by affinity-chromatography using epitope-specific immunogen.
Conjugation:	Unconjugated
Storage:	Store at -20°C as received.
Stability:	Stable for 12 months from date of receipt.
Gene Name:	gamma-aminobutyric acid type B receptor subunit 1
Database Link:	NP_001461 Entrez Gene 54393 Mouse Entrez Gene 81657 Rat Entrez Gene 2550 Human Q9UBS5
Synonyms:	GABABR1; GABBR1-3; GB1; GPRC3A
Note:	GABBR1 antibody detects endogenous levels of total GABBR1 protein.
Protein Families:	Druggable Genome, GPCR, Secreted Protein, Transmembrane
Protein Pathways:	Neuroactive ligand-receptor interaction

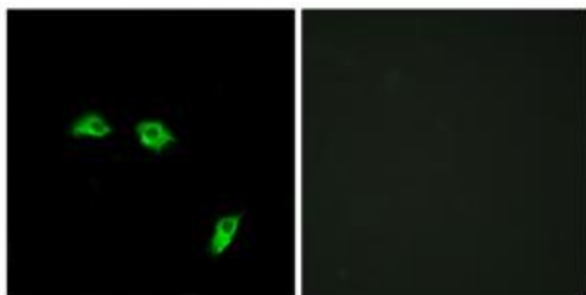


[View online »](#)

Product images:



Western blot analysis of extracts from K562 cells, using GABBR1 antibody. The lane on the right is treated with the synthesized peptide.



Immunofluorescence analysis of HeLa cells, using GABBR1 antibody. The picture on the right is treated with the synthesized peptide.