

Product datasheet for **TA313901**

IFI6 Rabbit Polyclonal Antibody

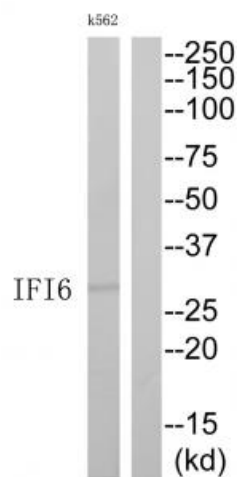
Product data:

Product Type:	Primary Antibodies
Applications:	WB
Recommended Dilution:	WB: 1:500~1:1000, ELISA: 1:10000
Reactivity:	Human
Host:	Rabbit
Isotype:	IgG
Clonality:	Polyclonal
Immunogen:	The antiserum was produced against synthesized peptide derived from C-terminal of human IFI6.
Formulation:	Phosphate buffered saline (without Mg ²⁺ and Ca ²⁺), pH 7.4, 150mM NaCl, 0.02% sodium azide and 50% glycerol.
Concentration:	lot specific
Purification:	The antibody was affinity-purified from rabbit antiserum by affinity-chromatography using epitope-specific immunogen.
Conjugation:	Unconjugated
Storage:	Store at -20°C as received.
Stability:	Stable for 12 months from date of receipt.
Gene Name:	interferon alpha inducible protein 6
Database Link:	NP_002029 Entrez Gene 2537 Human P09912
Synonyms:	6-16; FAM14C; G1P3; IFI-6-16; IFI616
Note:	IFI6 antibody detects endogenous levels of total IFI6 protein.
Protein Families:	Transmembrane



[View online »](#)

Product images:



Western blot analysis of extracts from K562 cells, using IFI6 antibody. The lane on the right is treated with the synthesized peptide.