

Product datasheet for **TA313894**

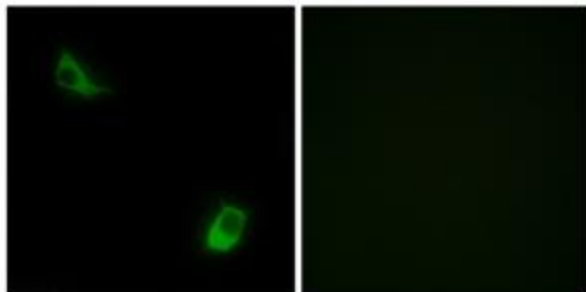
FPR3 Rabbit Polyclonal Antibody

Product data:

Product Type:	Primary Antibodies
Applications:	IF
Recommended Dilution:	IF: 1:100~1:500, ELISA: 1:40000
Reactivity:	Human
Host:	Rabbit
Isotype:	IgG
Clonality:	Polyclonal
Immunogen:	The antiserum was produced against synthesized peptide derived from internal of human FPRL2.
Formulation:	Phosphate buffered saline (without Mg ²⁺ and Ca ²⁺), pH 7.4, 150mM NaCl, 0.02% sodium azide and 50% glycerol.
Concentration:	lot specific
Purification:	The antibody was affinity-purified from rabbit antiserum by affinity-chromatography using epitope-specific immunogen.
Conjugation:	Unconjugated
Storage:	Store at -20°C as received.
Stability:	Stable for 12 months from date of receipt.
Gene Name:	formyl peptide receptor 3
Database Link:	NP_002021 Entrez Gene 2359 Human P25089
Synonyms:	FML2_HUMAN; FMLP-R-II; FMLPY; FPRH1; FPRH2; FPRL2; RMLP-R-I
Note:	FPRL2 antibody detects endogenous levels of total FPRL2 protein.
Protein Families:	Druggable Genome, GPCR, Transmembrane
Protein Pathways:	Neuroactive ligand-receptor interaction



[View online »](#)

Product images:

Immunofluorescence analysis of LOVO cells, using FPRL2 antibody. The picture on the right is treated with the synthesized peptide.