

## Product datasheet for **TA313891**

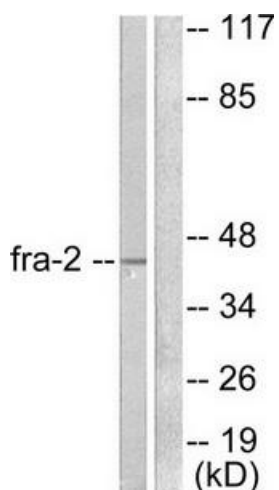
### **FRA2 (FOSL2) Rabbit Polyclonal Antibody**

#### **Product data:**

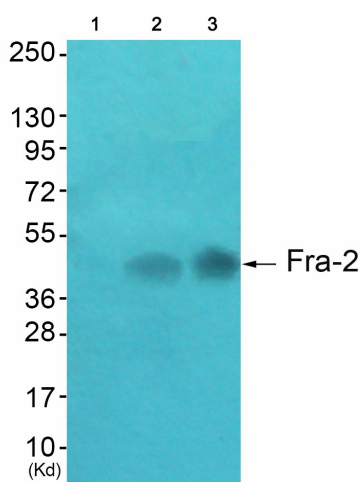
<b>Product Type:</b>	Primary Antibodies
<b>Applications:</b>	IHC, WB
<b>Recommended Dilution:</b>	WB: 1:500~1:3000, IHC: 1:50~1:100, ELISA: 1:10000
<b>Reactivity:</b>	Human, Mouse, Rat
<b>Host:</b>	Rabbit
<b>Isotype:</b>	IgG
<b>Clonality:</b>	Polyclonal
<b>Immunogen:</b>	The antiserum was produced against synthesized peptide derived from human Fra-2.
<b>Formulation:</b>	Phosphate buffered saline (without Mg <sup>2+</sup> and Ca <sup>2+</sup> ), pH 7.4, 150mM NaCl, 0.02% sodium azide and 50% glycerol.
<b>Concentration:</b>	lot specific
<b>Purification:</b>	The antibody was affinity-purified from rabbit antiserum by affinity-chromatography using epitope-specific immunogen.
<b>Conjugation:</b>	Unconjugated
<b>Storage:</b>	Store at -20°C as received.
<b>Stability:</b>	Stable for 12 months from date of receipt.
<b>Gene Name:</b>	FOS like 2, AP-1 transcription factor subunit
<b>Database Link:</b>	<a href="#">NP_005244</a> <a href="#">Entrez Gene 14284 Mouse</a> <a href="#">Entrez Gene 25446 Rat</a> <a href="#">Entrez Gene 2355 Human</a> <a href="#">P15408</a>
<b>Synonyms:</b>	FRA2
<b>Note:</b>	Fra-2 antibody detects endogenous levels of total Fra-2 protein.
<b>Protein Families:</b>	Druggable Genome, Transcription Factors



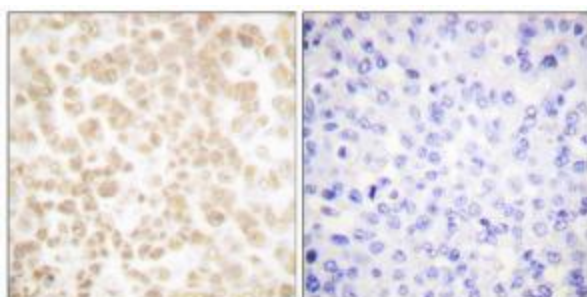
[View online »](#)

**Product images:**


Western blot analysis of extracts from LOVO cells, using Fra-2 antibody (#TA313891). The lane on the right is treated with the synthesized peptide.



Western blot analysis of extracts from A549 cells (Lane 2) and HepG2 cells (Lane 3), using Fra-2 Antibody. The lane on the left is treated with synthesized peptide.



Immunohistochemical analysis of paraffin-embedded human breast carcinoma tissue using Fra-2 antibody (#TA313891). The picture on the right is treated with the synthesized peptide.