

## Product datasheet for **TA313889**

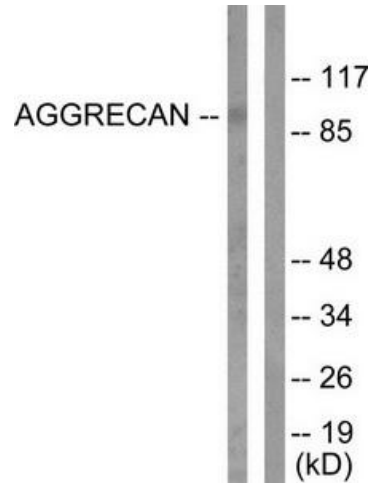
### Folate Binding Protein (FOLR1) Rabbit Polyclonal Antibody

#### Product data:

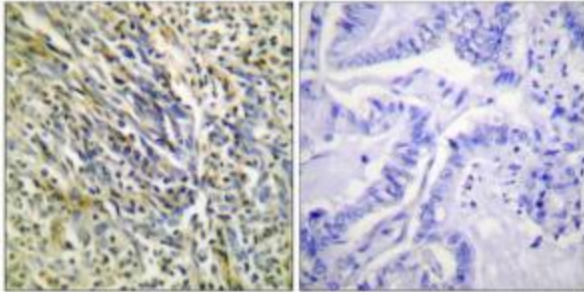
Product Type:	Primary Antibodies
Applications:	IHC, WB
Recommended Dilution:	WB: 1:500~1:3000, IHC: 1:50~1:100, ELISA: 1:20000
Reactivity:	Human, Rat
Host:	Rabbit
Isotype:	IgG
Clonality:	Polyclonal
Immunogen:	The antiserum was produced against synthesized peptide derived from human Aggrecan.
Formulation:	Phosphate buffered saline (without Mg <sup>2+</sup> and Ca <sup>2+</sup> ), pH 7.4, 150mM NaCl, 0.02% sodium azide and 50% glycerol.
Concentration:	lot specific
Purification:	The antibody was affinity-purified from rabbit antiserum by affinity-chromatography using epitope-specific immunogen.
Conjugation:	Unconjugated
Storage:	Store at -20°C as received.
Stability:	Stable for 12 months from date of receipt.
Gene Name:	folate receptor 1 (adult)
Database Link:	<a href="#">NP_000793</a> <a href="#">Entrez Gene 171049 Rat</a> <a href="#">Entrez Gene 2348 Human</a> <a href="#">P15328</a>
Synonyms:	FBP; FOLR
Note:	Aggrecan (Cleaved-Asp369) antibody detects endogenous levels of fragment of activated Aggrecan resulting from cleavage adjacent to Asp369.
Protein Families:	Druggable Genome, Secreted Protein, Transmembrane



[View online »](#)

**Product images:**

Western blot analysis of extracts from Jurkat cells, treated with Etoposide (25uM, 60mins), using Aggrecan (Cleaved-Asp369) antibody (#TA313889). The lane on the right is treated with the synthesized peptide.



Immunohistochemical analysis of paraffin-embedded human lung carcinoma tissue using Aggrecan (Cleaved-Asp369) antibody (#TA313889). The picture on the right is treated with the synthesized peptide.