

Product datasheet for **TA313888**

Folate Binding Protein (FOLR1) Rabbit Polyclonal Antibody

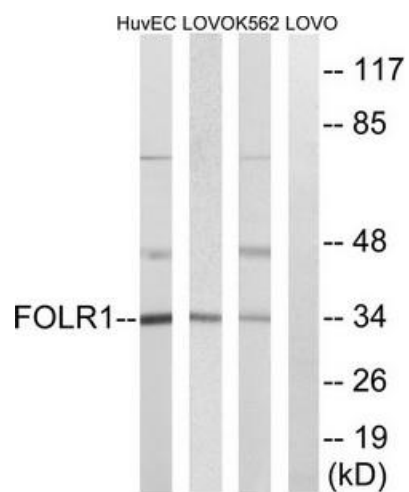
Product data:

Product Type:	Primary Antibodies
Applications:	WB
Recommended Dilution:	WB: 1:500~1:3000, ELISA: 1:1000
Reactivity:	Human, Mouse, Rat
Host:	Rabbit
Isotype:	IgG
Clonality:	Polyclonal
Immunogen:	The antiserum was produced against synthesized peptide derived from internal of human FOLR1.
Formulation:	Phosphate buffered saline (without Mg ²⁺ and Ca ²⁺), pH 7.4, 150mM NaCl, 0.02% sodium azide and 50% glycerol.
Concentration:	lot specific
Purification:	The antibody was affinity-purified from rabbit antiserum by affinity-chromatography using epitope-specific immunogen.
Conjugation:	Unconjugated
Storage:	Store at -20°C as received.
Stability:	Stable for 12 months from date of receipt.
Gene Name:	folate receptor 1 (adult)
Database Link:	NP_000793 Entrez Gene 14275 MouseEntrez Gene 171049 RatEntrez Gene 2348 Human P15328
Synonyms:	FBP; FOLR
Note:	FOLR1 antibody detects endogenous levels of total FOLR1 protein.
Protein Families:	Druggable Genome, Secreted Protein, Transmembrane



[View online »](#)

Product images:



Western blot analysis of extracts from HUVEC cells, LOVO cells and K562 cells, using FOLR1 antibody. The lane on the right is treated with the synthesized peptide.