

## Product datasheet for **TA313886**

### VEGF Receptor 1 (FLT1) Rabbit Polyclonal Antibody

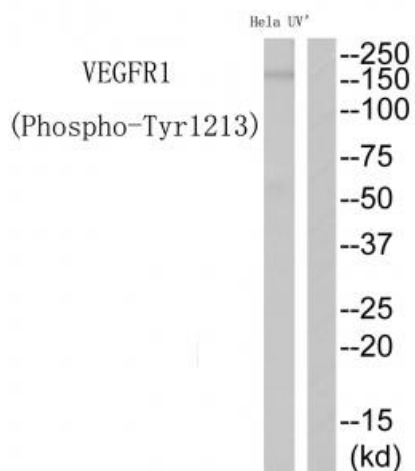
#### Product data:

Product Type:	Primary Antibodies
Applications:	WB
Recommended Dilution:	WB: 1:500~1:3000, ELISA: 1:10000
Reactivity:	Human, Mouse, Rat
Modifications:	Phospho-specific
Host:	Rabbit
Isotype:	IgG
Clonality:	Polyclonal
Immunogen:	The antiserum was produced against synthesized phosphopeptide derived from human VEGFR1 around the phosphorylation site of tyrosine 1213.
Formulation:	Phosphate buffered saline (without Mg <sup>2+</sup> and Ca <sup>2+</sup> ), pH 7.4, 150mM NaCl, 0.02% sodium azide and 50% glycerol.
Concentration:	lot specific
Purification:	The antibody was affinity-purified from rabbit antiserum by affinity-chromatography using epitope-specific immunogen.
Conjugation:	Unconjugated
Storage:	Store at -20°C as received.
Stability:	Stable for 12 months from date of receipt.
Gene Name:	fms related tyrosine kinase 1
Database Link:	<a href="#">NP_002010</a> <a href="#">Entrez Gene 14254 Mouse</a> <a href="#">Entrez Gene 54251 Rat</a> <a href="#">Entrez Gene 2321 Human</a> <a href="#">P17948</a>
Synonyms:	FLT; FLT-1; VEGFR-1; VEGFR1
Note:	VEGFR1 (Phospho-Tyr1213) Antibody detects endogenous levels of VEGFR1 only when phosphorylated at tyrosine 1213.
Protein Families:	Druggable Genome, Protein Kinase, Secreted Protein
Protein Pathways:	Cytokine-cytokine receptor interaction, Endocytosis, Focal adhesion

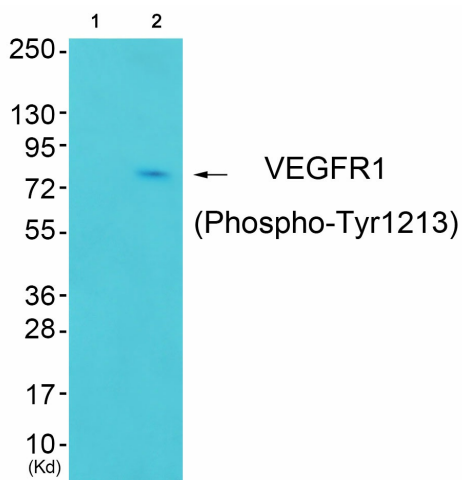


[View online »](#)

Product images:



Western blot analysis of extracts from HeLa cells treated with UV, using VEGFR1 (Phospho-Tyr1213) Antibody. The lane on the right is treated with the synthesized peptide.



Western blot analysis of extracts from 3T3 cells (Lane 2), using VEGFR1 (Phospho-Tyr1213) Antibody. The lane on the left is treated with synthesized peptide.