

Product datasheet for **TA313883**

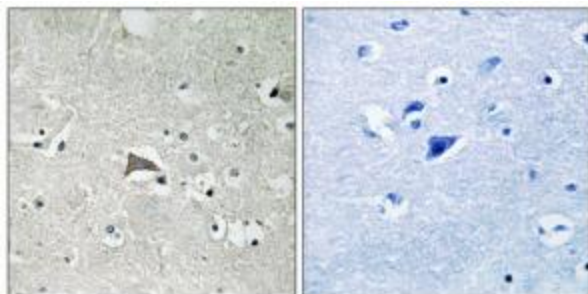
VEGF Receptor 1 (FLT1) Rabbit Polyclonal Antibody

Product data:

Product Type:	Primary Antibodies
Applications:	IHC
Recommended Dilution:	IHC: 1:50~1:100, ELISA: 1:10000
Reactivity:	Human, Mouse, Rat
Host:	Rabbit
Isotype:	IgG
Clonality:	Polyclonal
Immunogen:	The antiserum was produced against synthesized peptide derived from Internal of human VEGFR1.
Formulation:	Phosphate buffered saline (without Mg ²⁺ and Ca ²⁺), pH 7.4, 150mM NaCl, 0.02% sodium azide and 50% glycerol.
Concentration:	lot specific
Purification:	The antibody was affinity-purified from rabbit antiserum by affinity-chromatography using epitope-specific immunogen.
Conjugation:	Unconjugated
Storage:	Store at -20°C as received.
Stability:	Stable for 12 months from date of receipt.
Gene Name:	fms related tyrosine kinase 1
Database Link:	NP_002010 Entrez Gene 14254 Mouse Entrez Gene 54251 Rat Entrez Gene 2321 Human P17948
Synonyms:	FLT; FLT-1; VEGFR-1; VEGFR1
Note:	VEGFR1 antibody detects endogenous levels of total VEGFR1 protein.
Protein Families:	Druggable Genome, Protein Kinase, Secreted Protein
Protein Pathways:	Cytokine-cytokine receptor interaction, Endocytosis, Focal adhesion



[View online »](#)

Product images:

Immunohistochemistry analysis of paraffin-embedded human brain tissue using VEGFR1 antibody. The picture on the right is treated with the synthesized peptide.