

Product datasheet for **TA313881**

Filamin A (FLNA) Rabbit Polyclonal Antibody

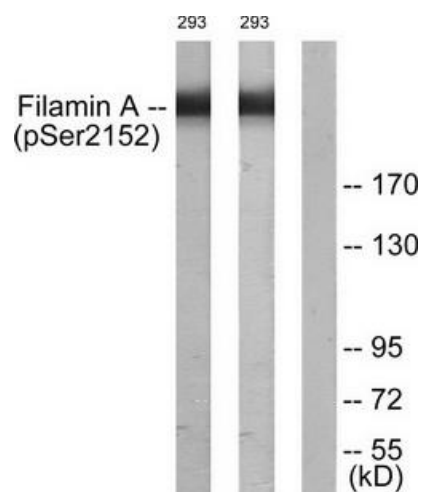
Product data:

Product Type:	Primary Antibodies
Applications:	WB
Recommended Dilution:	WB: 1:500~1:3000, ELISA: 1:10000
Reactivity:	Human, Mouse, Rat
Modifications:	Phospho-specific
Host:	Rabbit
Isotype:	IgG
Clonality:	Polyclonal
Immunogen:	The antiserum was produced against synthesized phosphopeptide derived from human Filamin A around the phosphorylation site of serine 2152 (A-P-SP-V-A).
Formulation:	Phosphate buffered saline (without Mg ²⁺ and Ca ²⁺), pH 7.4, 150mM NaCl, 0.02% sodium azide and 50% glycerol.
Concentration:	lot specific
Purification:	The antibody was affinity-purified from rabbit antiserum by affinity-chromatography using epitope-specific immunogen.
Conjugation:	Unconjugated
Storage:	Store at -20°C as received.
Stability:	Stable for 12 months from date of receipt.
Gene Name:	filamin A
Database Link:	NP_001447 Entrez Gene 192176 Mouse Entrez Gene 293860 Rat Entrez Gene 2316 Human P21333
Synonyms:	ABP-280; ABPX; CSBS; CVD1; FLN; FLN-A; FLN1; FMD; MNS; NHBP; OPD; OPD1; OPD2; XLVD; XMVD
Note:	Filamin A (phospho-Ser2152) antibody detects endogenous levels of Filamin A only when phosphorylated at serine 2152
Protein Pathways:	Focal adhesion, MAPK signaling pathway



[View online »](#)

Product images:



Western blot analysis of extracts from 293 cells treated with EGF (200ng/ml, 5mins), using Filamin A (phospho-Ser2152) antibody. The lane on the right is treated with the synthesized peptide.