

## Product datasheet for **TA313878**

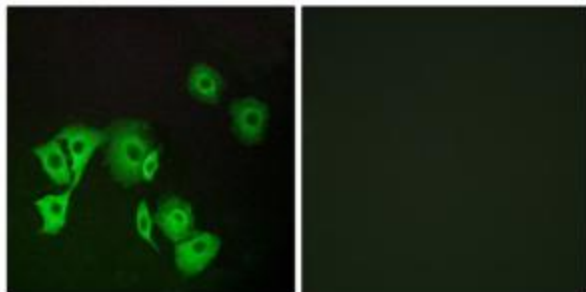
### FOX E1 Rabbit Polyclonal Antibody

#### Product data:

Product Type:	Primary Antibodies
Applications:	IF
Recommended Dilution:	IF: 1:100~1:500, ELISA: 1:20000
Reactivity:	Human, Mouse, Rat
Host:	Rabbit
Isotype:	IgG
Clonality:	Polyclonal
Immunogen:	The antiserum was produced against synthesized peptide derived from internal of human TTF2.
Formulation:	Phosphate buffered saline (without Mg <sup>2+</sup> and Ca <sup>2+</sup> ), pH 7.4, 150mM NaCl, 0.02% sodium azide and 50% glycerol.
Concentration:	lot specific
Purification:	The antibody was affinity-purified from rabbit antiserum by affinity-chromatography using epitope-specific immunogen.
Conjugation:	Unconjugated
Storage:	Store at -20°C as received.
Stability:	Stable for 12 months from date of receipt.
Gene Name:	forkhead box E1
Database Link:	<a href="#">NP_004464</a> <a href="#">Entrez Gene 110805 MouseEntrez Gene 192274 RatEntrez Gene 2304 Human</a> <a href="#">O00358</a>
Synonyms:	FKHL15; FOXE2; HFKH4; HFKL5; TITF2; TTF-2; TTF2
Note:	TTF2 antibody detects endogenous levels of total TTF2 protein.
Protein Families:	Druggable Genome, Transcription Factors



[View online »](#)

**Product images:**

Immunofluorescence analysis of A549 cells, using TTF2 antibody. The picture on the right is treated with the synthesized peptide.