

Product datasheet for **TA313871**

FGF13 Rabbit Polyclonal Antibody

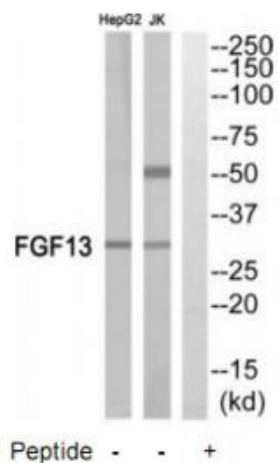
Product data:

Product Type:	Primary Antibodies
Applications:	WB
Recommended Dilution:	WB: 1:500~1:3000, ELISA: 1:5000
Reactivity:	Human, Mouse, Rat
Host:	Rabbit
Isotype:	IgG
Clonality:	Polyclonal
Immunogen:	The antiserum was produced against synthesized peptide derived from internal of human FGF13.
Formulation:	Phosphate buffered saline (without Mg ²⁺ and Ca ²⁺), pH 7.4, 150mM NaCl, 0.02% sodium azide and 50% glycerol.
Concentration:	lot specific
Purification:	The antibody was affinity-purified from rabbit antiserum by affinity-chromatography using epitope-specific immunogen.
Conjugation:	Unconjugated
Storage:	Store at -20°C as received.
Stability:	Stable for 12 months from date of receipt.
Gene Name:	fibroblast growth factor 13
Database Link:	NP_001132970 Entrez Gene 14168 MouseEntrez Gene 84488 RatEntrez Gene 2258 Human Q92913
Synonyms:	FGF-13; FGF2; FHF-2; FHF2
Note:	FGF13 antibody detects endogenous levels of total FGF13 protein.
Protein Families:	Secreted Protein
Protein Pathways:	MAPK signaling pathway, Melanoma, Pathways in cancer, Regulation of actin cytoskeleton



[View online »](#)

Product images:



Western blot analysis of extracts from Jurkat cells and HepG2 cells, using FGF13 antibody. The lane on the right is treated with the synthesized peptide.