

Product datasheet for **TA313868**

FER Rabbit Polyclonal Antibody

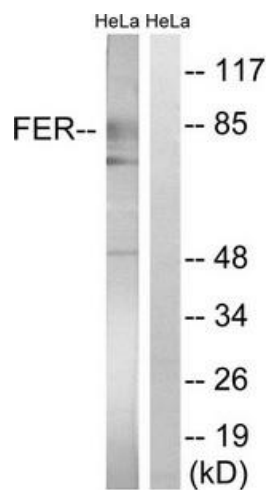
Product data:

Product Type:	Primary Antibodies
Applications:	WB
Recommended Dilution:	WB: 1:500~1:3000, ELISA: 1:40000
Reactivity:	Human, Mouse
Host:	Rabbit
Isotype:	IgG
Clonality:	Polyclonal
Immunogen:	The antiserum was produced against synthesized non-phosphopeptide derived from human FER around the phosphorylation site of tyrosine 402 (V-N-YP-E-E).
Formulation:	Phosphate buffered saline (without Mg ²⁺ and Ca ²⁺), pH 7.4, 150mM NaCl, 0.02% sodium azide and 50% glycerol.
Concentration:	lot specific
Purification:	The antibody was affinity-purified from rabbit antiserum by affinity-chromatography using epitope-specific immunogen.
Conjugation:	Unconjugated
Storage:	Store at -20°C as received.
Stability:	Stable for 12 months from date of receipt.
Gene Name:	FER tyrosine kinase
Database Link:	NP_005237 Entrez Gene 14158 Mouse Entrez Gene 103921 Mouse Entrez Gene 2241 Human P16591
Synonyms:	FerT; Pe1Fe3; Pe1Fe6; Pe1Fe10; Pe1Fe13; PPP1R74; TYK3
Note:	FER (Ab-402) antibody detects endogenous levels of total FER protein.
Protein Families:	Druggable Genome, Protein Kinase
Protein Pathways:	Adherens junction



[View online »](#)

Product images:



Western blot analysis of extracts from HeLa cells, treated with paclitaxel (1 μ M, 24 hours), using FER (Ab-402) antibody. The lane on the right is treated with the synthesized peptide.