

## Product datasheet for **TA313865**

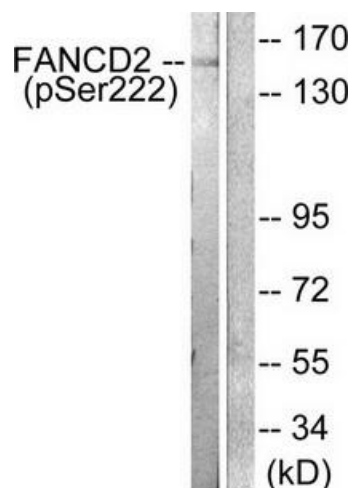
### FANCD2 Rabbit Polyclonal Antibody

#### Product data:

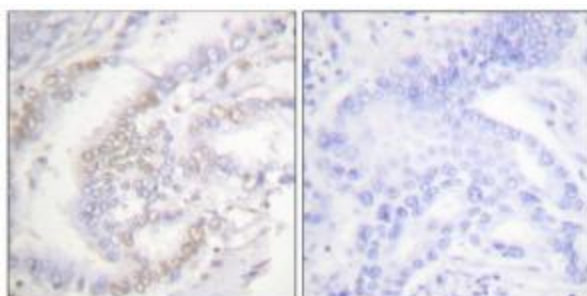
Product Type:	Primary Antibodies
Applications:	IHC, WB
Recommended Dilution:	WB: 1:500~1:3000, IHC: 1:50~1:100, ELISA: 1:1000
Reactivity:	Human
Modifications:	Phospho-specific
Host:	Rabbit
Isotype:	IgG
Clonality:	Polyclonal
Immunogen:	The antiserum was produced against synthesized phosphopeptide derived from human FANCD2 around the phosphorylation site of serine 222 (G-D-SP-Q-H).
Formulation:	Phosphate buffered saline (without Mg <sup>2+</sup> and Ca <sup>2+</sup> ), pH 7.4, 150mM NaCl, 0.02% sodium azide and 50% glycerol.
Concentration:	lot specific
Purification:	The antibody was affinity-purified from rabbit antiserum by affinity-chromatography using epitope-specific immunogen.
Conjugation:	Unconjugated
Storage:	Store at -20°C as received.
Stability:	Stable for 12 months from date of receipt.
Gene Name:	Fanconi anemia complementation group D2
Database Link:	<a href="#">NP_149075</a> <a href="#">Entrez Gene 2177 Human</a> <a href="#">Q9BXW9</a>
Synonyms:	FA-D2; FA4; FACD; FAD; FAD2; FANCD
Note:	FANCD2 (Phospho-Ser222) antibody detects endogenous levels of FANCD2 only when phosphorylated at serine 222.
Protein Families:	Druggable Genome



[View online »](#)

**Product images:**

Western blot analysis of extracts from HT-29 cells, treated with Calyculin A (50ng/ml, 30mins), using FANCD2 (Phospho-Ser222) antibody (#TA313865). The lane on the right is treated with the synthesized peptide.



Immunohistochemical analysis of paraffin-embedded human lung carcinoma tissue using FANCD2 (Phospho-Ser222) antibody (#TA313865). The picture on the right is treated with the synthesized peptide.