

Product datasheet for **TA313861**

Factor XII (F12) Rabbit Polyclonal Antibody

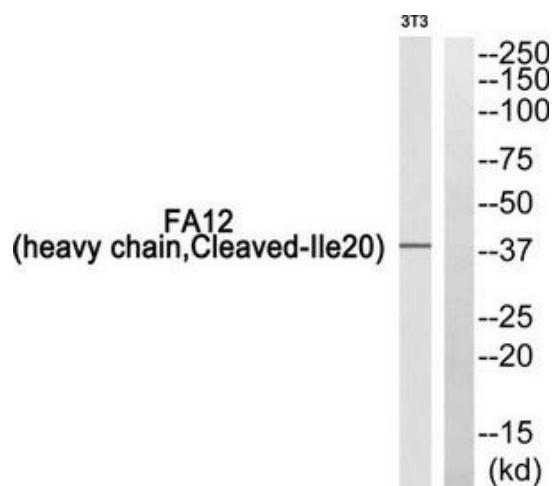
Product data:

Product Type:	Primary Antibodies
Applications:	WB
Recommended Dilution:	WB: 1:500~1:3000, IHC: 1:50~1:100, ELISA: 1:20000
Reactivity:	Human
Host:	Rabbit
Isotype:	IgG
Clonality:	Polyclonal
Immunogen:	The antiserum was produced against synthesized peptide derived from human FA12 heavy chain.
Formulation:	Phosphate buffered saline (without Mg ²⁺ and Ca ²⁺), pH 7.4, 150mM NaCl, 0.02% sodium azide and 50% glycerol.
Concentration:	lot specific
Purification:	The antibody was affinity-purified from rabbit antiserum by affinity-chromatography using epitope-specific immunogen.
Conjugation:	Unconjugated
Storage:	Store at -20°C as received.
Stability:	Stable for 12 months from date of receipt.
Gene Name:	coagulation factor XII
Database Link:	NP_000496 Entrez Gene 2161 Human P00748
Synonyms:	HAE3; HAEX; HAF
Note:	FA12 (heavy chain, Cleaved-Ile20) antibody detects endogenous levels of fragment of activated FA12 heavy chain resulting from cleavage adjacent to Ile20.
Protein Families:	Druggable Genome, Protease, Secreted Protein
Protein Pathways:	Complement and coagulation cascades



[View online »](#)

Product images:



Western blot analysis of extracts from 3T3 cells, using FA12 (heavy chain, Cleaved-Ile20) antibody. The lane on the right is treated with the synthesized peptide.