

Product datasheet for **TA313859**

Factor VII (F7) Rabbit Polyclonal Antibody

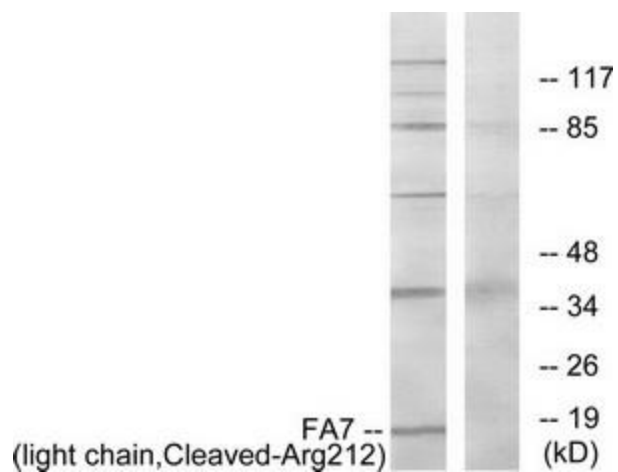
Product data:

Product Type:	Primary Antibodies
Applications:	IHC, WB
Recommended Dilution:	WB: 1:500~1:3000, IHC: 1:50~1:100, ELISA: 1:20000
Reactivity:	Human
Host:	Rabbit
Isotype:	IgG
Clonality:	Polyclonal
Immunogen:	The antiserum was produced against synthesized peptide derived from human FA7.
Formulation:	Phosphate buffered saline (without Mg ²⁺ and Ca ²⁺), pH 7.4, 150mM NaCl, 0.02% sodium azide and 50% glycerol.
Concentration:	lot specific
Purification:	The antibody was affinity-purified from rabbit antiserum by affinity-chromatography using epitope-specific immunogen.
Conjugation:	Unconjugated
Storage:	Store at -20°C as received.
Stability:	Stable for 12 months from date of receipt.
Gene Name:	coagulation factor VII
Database Link:	NP_000122 Entrez Gene 2155 Human P08709
Synonyms:	SPCA
Note:	FA7 (light chain, Cleaved-Arg212) antibody detects endogenous levels of fragment of activated FA7 resulting from cleavage adjacent to Arg212.
Protein Families:	Druggable Genome, Protease
Protein Pathways:	Complement and coagulation cascades

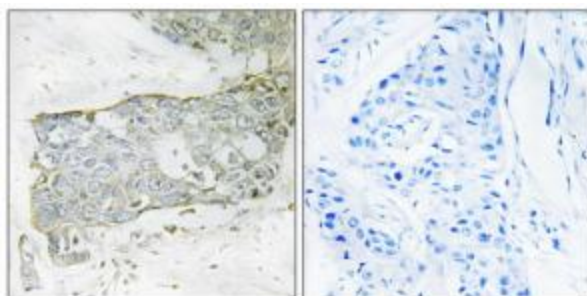


[View online »](#)

Product images:



Western blot analysis of extracts from Jurkat cells, treated with eto (25uM, 24hours), using FA7 (light chain, Cleaved-Arg212) antibody. The lane on the right is treated with the synthesized peptide.



Immunohistochemistry analysis of paraffin-embedded human breast carcinoma tissue using FA7 (light chain, Cleaved-Arg212) antibody. The picture on the right is treated with the synthesized peptide.