

Product datasheet for **TA313850**

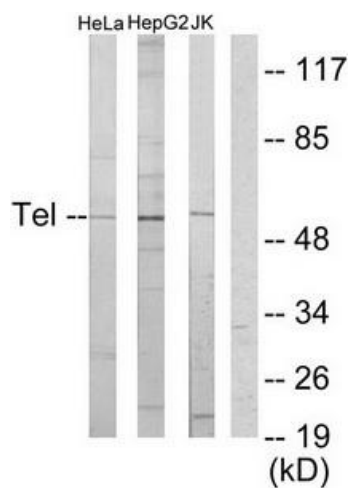
ETV6 Rabbit Polyclonal Antibody

Product data:

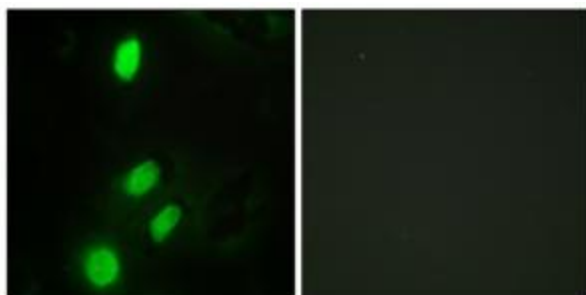
| | |
|-----------------------|--|
| Product Type: | Primary Antibodies |
| Applications: | IF, WB |
| Recommended Dilution: | WB: 1:500~1:3000, IF: 1:100~1:500, ELISA: 1:1000 |
| Reactivity: | Human, Mouse, Rat |
| Host: | Rabbit |
| Isotype: | IgG |
| Clonality: | Polyclonal |
| Immunogen: | The antiserum was produced against synthesized peptide derived from internal of human ETV6. |
| Formulation: | Phosphate buffered saline (without Mg ²⁺ and Ca ²⁺), pH 7.4, 150mM NaCl, 0.02% sodium azide and 50% glycerol. |
| Concentration: | lot specific |
| Purification: | The antibody was affinity-purified from rabbit antiserum by affinity-chromatography using epitope-specific immunogen. |
| Conjugation: | Unconjugated |
| Storage: | Store at -20°C as received. |
| Stability: | Stable for 12 months from date of receipt. |
| Gene Name: | ETS variant 6 |
| Database Link: | NP_001978 Entrez Gene 14011 MouseEntrez Gene 312777 RatEntrez Gene 2120 Human P41212 |
| Synonyms: | ABL; TEL; THC5 |
| Note: | ETV6 antibody detects endogenous levels of total ETV6 protein. |
| Protein Families: | Druggable Genome, Transcription Factors |
| Protein Pathways: | Dorso-ventral axis formation |



[View online »](#)

Product images:

Western blot analysis of extracts from HeLa cells, HepG2 cells and Jurkat cells, using ETV6 antibody. The lane on the right is treated with the synthesized peptide.



Immunofluorescence analysis of HeLa cells, using ETV6 antibody. The picture on the right is treated with the synthesized peptide.