

## Product datasheet for **TA313847**

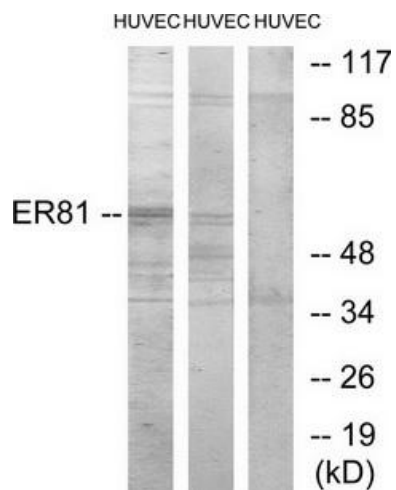
### ER81 (ETV1) Rabbit Polyclonal Antibody

#### Product data:

Product Type:	Primary Antibodies
Applications:	WB
Recommended Dilution:	WB: 1:500~1:3000, ELISA: 1:1000
Reactivity:	Human, Mouse
Host:	Rabbit
Isotype:	IgG
Clonality:	Polyclonal
Immunogen:	The antiserum was produced against synthesized peptide derived from N-terminal of human ER81.
Formulation:	Phosphate buffered saline (without Mg <sup>2+</sup> and Ca <sup>2+</sup> ), pH 7.4, 150mM NaCl, 0.02% sodium azide and 50% glycerol.
Concentration:	lot specific
Purification:	The antibody was affinity-purified from rabbit antiserum by affinity-chromatography using epitope-specific immunogen.
Conjugation:	Unconjugated
Storage:	Store at -20°C as received.
Stability:	Stable for 12 months from date of receipt.
Gene Name:	ETS variant 1
Database Link:	<a href="#">NP_001156619</a> <a href="#">Entrez Gene 14009 Mouse</a> <a href="#">Entrez Gene 2115 Human</a> <a href="#">P50549</a>
Synonyms:	ER81
Note:	ER81 antibody detects endogenous levels of total ER81 protein.
Protein Families:	ES Cell Differentiation/IPS, Transcription Factors



[View online »](#)

**Product images:**


Western blot analysis of extracts from HUVEC cells treated with PMA (125ng/ml, 30mins), and HUVEC cells treated with serum (20%, 30mins), using ER81 antibody. The lane on the right is treated with the synthesized peptide.