

Product datasheet for **TA313846**

ERF Rabbit Polyclonal Antibody

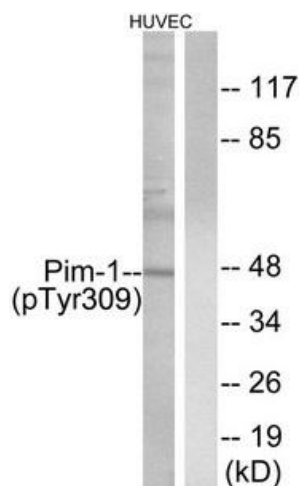
Product data:

Product Type:	Primary Antibodies
Applications:	WB
Recommended Dilution:	WB: 1:500~1:3000, ELISA: 1:40000
Reactivity:	Human, Mouse, Rat
Modifications:	Phospho-specific
Host:	Rabbit
Isotype:	IgG
Clonality:	Polyclonal
Immunogen:	The antiserum was produced against synthesized phosphopeptide derived from human Pim-1 around the phosphorylation site of tyrosine 309 (H-R-YP-H-G).
Formulation:	Phosphate buffered saline (without Mg ²⁺ and Ca ²⁺), pH 7.4, 150mM NaCl, 0.02% sodium azide and 50% glycerol.
Concentration:	lot specific
Purification:	The antibody was affinity-purified from rabbit antiserum by affinity-chromatography using epitope-specific immunogen.
Conjugation:	Unconjugated
Storage:	Store at -20°C as received.
Stability:	Stable for 12 months from date of receipt.
Gene Name:	ETS2 repressor factor
Database Link:	NP_006485 Entrez Gene 13875 Mouse Entrez Gene 292721 Rat Entrez Gene 2077 Human P50548
Synonyms:	CRS4; PE-2; PE2
Note:	Pim-1 (Phospho-Tyr309) antibody detects endogenous levels of Pim-1 only when phosphorylated at tyrosine 309.
Protein Families:	Transcription Factors



[View online »](#)

Product images:



Western blot analysis of extracts from HUVEC cells, treated with PMA (125ng/ml, 30mins), using Pim-1 (Phospho-Tyr309) antibody. The lane on the right is treated with the synthesized peptide.