

Product datasheet for **TA313839**

EPOR Rabbit Polyclonal Antibody

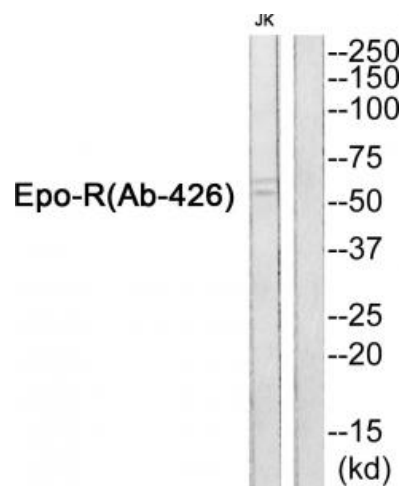
Product data:

Product Type:	Primary Antibodies
Applications:	WB
Recommended Dilution:	WB: 1:500~1:3000, ELISA: 1:20000
Reactivity:	Human, Mouse, Rat
Host:	Rabbit
Isotype:	IgG
Clonality:	Polyclonal
Immunogen:	The antiserum was produced against synthesized peptide derived from Internal of human Epo-R.
Formulation:	Phosphate buffered saline (without Mg ²⁺ and Ca ²⁺), pH 7.4, 150mM NaCl, 0.02% sodium azide and 50% glycerol.
Concentration:	lot specific
Purification:	The antibody was affinity-purified from rabbit antiserum by affinity-chromatography using epitope-specific immunogen.
Conjugation:	Unconjugated
Storage:	Store at -20°C as received.
Stability:	Stable for 12 months from date of receipt.
Gene Name:	erythropoietin receptor
Database Link:	NP_000112 Entrez Gene 13857 MouseEntrez Gene 24336 RatEntrez Gene 2057 Human P19235
Synonyms:	EPO-R
Note:	Epo-R (Ab-426) Antibody detects endogenous levels of total Epo-R protein.
Protein Families:	Druggable Genome, Secreted Protein, Transmembrane
Protein Pathways:	Cytokine-cytokine receptor interaction, Hematopoietic cell lineage, Jak-STAT signaling pathway



[View online »](#)

Product images:



Western blot analysis of extracts from JurKat cells, using Epo-R (Ab-426) Antibody. The lane on the right is treated with the synthesized peptide.