

Product datasheet for **TA313836**

Eph receptor B2 (EPHB2) Rabbit Polyclonal Antibody

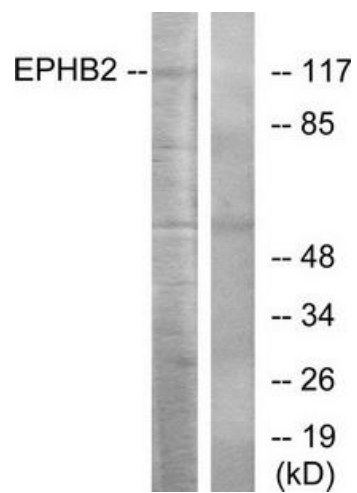
Product data:

Product Type:	Primary Antibodies
Applications:	WB
Recommended Dilution:	WB: 1:500~1:3000, ELISA: 1:10000
Reactivity:	Human
Host:	Rabbit
Isotype:	IgG
Clonality:	Polyclonal
Immunogen:	The antiserum was produced against synthesized peptide derived from C-terminal of human EPHB2.
Formulation:	Phosphate buffered saline (without Mg ²⁺ and Ca ²⁺), pH 7.4, 150mM NaCl, 0.02% sodium azide and 50% glycerol.
Concentration:	lot specific
Purification:	The antibody was affinity-purified from rabbit antiserum by affinity-chromatography using epitope-specific immunogen.
Conjugation:	Unconjugated
Storage:	Store at -20°C as received.
Stability:	Stable for 12 months from date of receipt.
Gene Name:	EPH receptor B2
Database Link:	NP_004433 Entrez Gene 2048 Human P29323
Synonyms:	CAPB; DRT; EK5; EPHT3; ERK; Hek5; PCBC; Tyro5
Note:	EPHB2 antibody detects endogenous levels of total EPHB2 protein.
Protein Families:	Druggable Genome, Protein Kinase, Transmembrane
Protein Pathways:	Axon guidance



[View online »](#)

Product images:



Western blot analysis of extracts from Jurkat cells, using EPHB2 antibody. The lane on the right is treated with the synthesized peptide.