

Product datasheet for **TA313833**

Eph receptor B1 (EPHB1) Rabbit Polyclonal Antibody

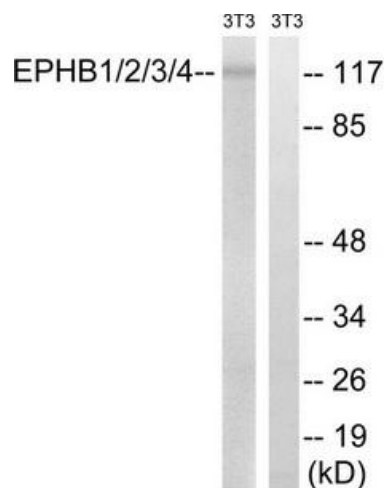
Product data:

Product Type:	Primary Antibodies
Applications:	WB
Recommended Dilution:	WB: 1:500~1:3000, ELISA: 1:10000
Reactivity:	Human, Mouse
Host:	Rabbit
Isotype:	IgG
Clonality:	Polyclonal
Immunogen:	The antiserum was produced against synthesized non-phosphopeptide derived from human EPHB1/2/3/4 around the phosphorylation site of tyrosine 600/602/614/596 (F-T-YP-E-D).
Formulation:	Phosphate buffered saline (without Mg ²⁺ and Ca ²⁺), pH 7.4, 150mM NaCl, 0.02% sodium azide and 50% glycerol.
Concentration:	lot specific
Purification:	The antibody was affinity-purified from rabbit antiserum by affinity-chromatography using epitope-specific immunogen.
Conjugation:	Unconjugated
Storage:	Store at -20°C as received.
Stability:	Stable for 12 months from date of receipt.
Gene Name:	EPH receptor B1
Database Link:	NP_004432 Entrez Gene 270190 Mouse Entrez Gene 2047 Human P54762
Synonyms:	ELK; EPHT2; Hek6; NET
Note:	EPHB1/2/3/4 (Ab-600/602/614/596) antibody detects endogenous levels of total EPHB1/2/3/4 protein.
Protein Families:	Druggable Genome, Protein Kinase, Transmembrane
Protein Pathways:	Axon guidance



[View online »](#)

Product images:



Western blot analysis of extracts from 3T3 cells, treated with heat shock, using EPHB1/2/3/4 (Ab-600/602/614/596) antibody. The lane on the right is treated with the synthesized peptide.