

Product datasheet for **TA313832**

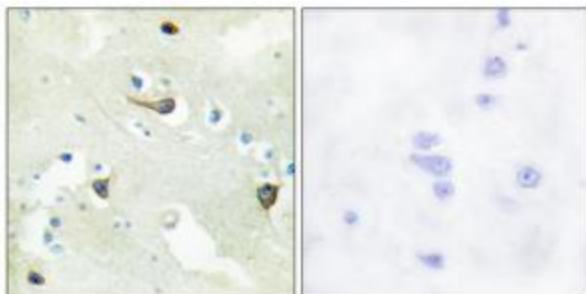
Eph receptor B1 (EPHB1) Rabbit Polyclonal Antibody

Product data:

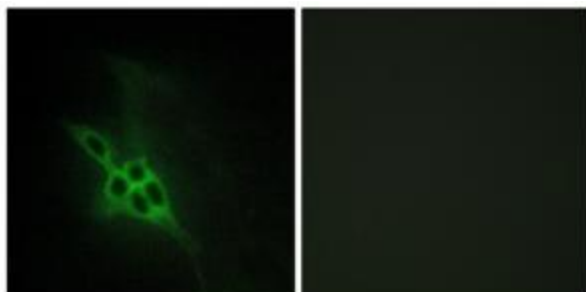
Product Type:	Primary Antibodies
Applications:	IF, IHC
Recommended Dilution:	IHC: 1:50~1:100, IF: 1:100~1:500, ELISA: 1:20000
Reactivity:	Human, Mouse
Host:	Rabbit
Isotype:	IgG
Clonality:	Polyclonal
Immunogen:	The antiserum was produced against synthesized peptide derived from internal of human EPHB1/2/3.
Formulation:	Phosphate buffered saline (without Mg ²⁺ and Ca ²⁺), pH 7.4, 150mM NaCl, 0.02% sodium azide and 50% glycerol.
Concentration:	lot specific
Purification:	The antibody was affinity-purified from rabbit antiserum by affinity-chromatography using epitope-specific immunogen.
Conjugation:	Unconjugated
Storage:	Store at -20°C as received.
Stability:	Stable for 12 months from date of receipt.
Gene Name:	EPH receptor B1
Database Link:	NP_004432 Entrez Gene 270190 Mouse Entrez Gene 2047 Human P54762
Synonyms:	ELK; EPHT2; Hek6; NET
Note:	EPHB1/2/3 antibody detects endogenous levels of total EPHB1/2/3 protein.
Protein Families:	Druggable Genome, Protein Kinase, Transmembrane
Protein Pathways:	Axon guidance



[View online »](#)

Product images:

Immunohistochemistry analysis of paraffin-embedded human brain tissue using EPHB1/2/3 antibody. The picture on the right is treated with the synthesized peptide.



Immunofluorescence analysis of NIH/3T3 cells, using EPHB1/2/3 antibody. The picture on the right is treated with the synthesized peptide.