

Product datasheet for **TA313830**

Eph receptor A7 (EPHA7) Rabbit Polyclonal Antibody

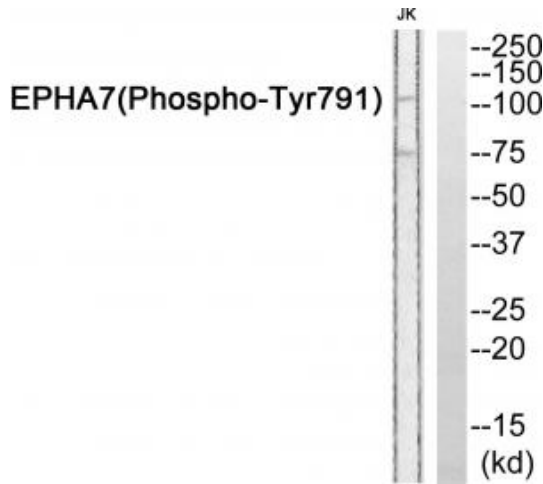
Product data:

Product Type:	Primary Antibodies
Applications:	WB
Recommended Dilution:	WB: 1:500~1:3000, ELISA: 1:10000
Reactivity:	Human, Mouse, Rat
Modifications:	Phospho-specific
Host:	Rabbit
Isotype:	IgG
Clonality:	Polyclonal
Immunogen:	The antiserum was produced against synthesized phosphopeptide derived from human EPHA7 around the phosphorylation site of tyrosine 791.
Formulation:	Phosphate buffered saline (without Mg ²⁺ and Ca ²⁺), pH 7.4, 150mM NaCl, 0.02% sodium azide and 50% glycerol.
Concentration:	lot specific
Purification:	The antibody was affinity-purified from rabbit antiserum by affinity-chromatography using epitope-specific immunogen.
Conjugation:	Unconjugated
Storage:	Store at -20°C as received.
Stability:	Stable for 12 months from date of receipt.
Gene Name:	EPH receptor A7
Database Link:	NP_004431 Entrez Gene 13841 Mouse Entrez Gene 171287 Rat Entrez Gene 2045 Human Q15375
Synonyms:	EHK-3; EHK3; EK11; HEK11
Note:	EPHA7 (Phospho-Tyr791) antibody detects endogenous levels of EPHA7 only when phosphorylated at tyrosine 791.
Protein Families:	Druggable Genome, Protein Kinase, Transmembrane
Protein Pathways:	Axon guidance

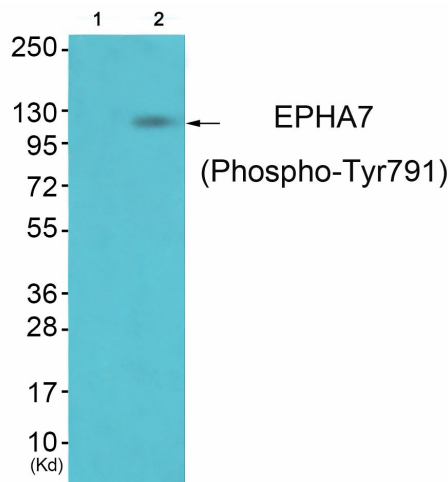


[View online »](#)

Product images:



Western blot analysis of extracts from JurKat cells, using EPHA7 (Phospho-Tyr791) antibody. The lane on the right is treated with the synthesized peptide.



Western blot analysis of extracts from JK cells (Lane 2), using EPHA7 (Phospho-Tyr791) Antibody. The lane on the left is treated with synthesized peptide.