

Product datasheet for **TA313828**

Eph receptor A5 (EPHA5) Rabbit Polyclonal Antibody

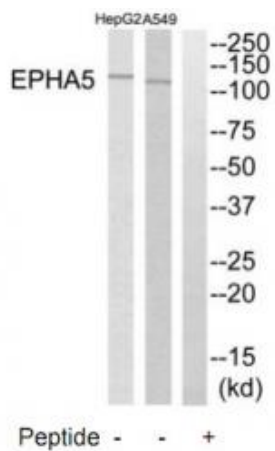
Product data:

Product Type:	Primary Antibodies
Applications:	WB
Recommended Dilution:	WB: 1:500~1:3000, ELISA: 1:20000
Reactivity:	Human, Mouse, Rat
Host:	Rabbit
Isotype:	IgG
Clonality:	Polyclonal
Immunogen:	The antiserum was produced against synthesized peptide derived from internal of human EPHA5.
Formulation:	Phosphate buffered saline (without Mg ²⁺ and Ca ²⁺), pH 7.4, 150mM NaCl, 0.02% sodium azide and 50% glycerol.
Concentration:	lot specific
Purification:	The antibody was affinity-purified from rabbit antiserum by affinity-chromatography using epitope-specific immunogen.
Conjugation:	Unconjugated
Storage:	Store at -20°C as received.
Stability:	Stable for 12 months from date of receipt.
Gene Name:	EPH receptor A5
Database Link:	NP_004430 Entrez Gene 13839 Mouse Entrez Gene 79208 Rat Entrez Gene 2044 Human P54756
Synonyms:	CEK7; EHK-1; EHK1; EK7; HEK7; TYRO4
Note:	EPHA5 antibody detects endogenous levels of total EPHA5 protein.
Protein Families:	Druggable Genome, Protein Kinase, Transmembrane
Protein Pathways:	Axon guidance



[View online »](#)

Product images:



Western blot analysis of extracts from HepG2 cells and A549 cells, using EPHA5 antibody. The lane on the right is treated with the synthesized peptide.