

Product datasheet for **TA313823**

EPB41 Rabbit Polyclonal Antibody

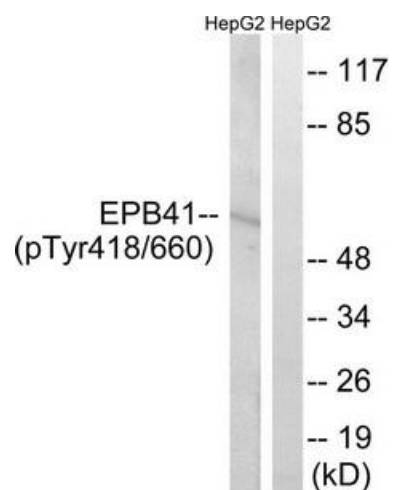
Product data:

Product Type:	Primary Antibodies
Applications:	WB
Recommended Dilution:	WB: 1:500~1:3000, ELISA: 1:1000
Reactivity:	Human, Mouse
Modifications:	Phospho-specific
Host:	Rabbit
Isotype:	IgG
Clonality:	Polyclonal
Immunogen:	The antiserum was produced against synthesized phosphopeptide derived from human EPB41 around the phosphorylation site of tyrosine 660/418 (N-I-YP-I-R).
Formulation:	Phosphate buffered saline (without Mg ²⁺ and Ca ²⁺), pH 7.4, 150mM NaCl, 0.02% sodium azide and 50% glycerol.
Concentration:	lot specific
Purification:	The antibody was affinity-purified from rabbit antiserum by affinity-chromatography using epitope-specific immunogen.
Conjugation:	Unconjugated
Storage:	Store at -20°C as received.
Stability:	Stable for 12 months from date of receipt.
Gene Name:	erythrocyte membrane protein band 4.1
Database Link:	NP_976218 Entrez Gene 269587 Mouse Entrez Gene 2035 Human P11171
Synonyms:	4.1R; EL1; HE
Note:	EPB41 (Phospho-Tyr660/418) antibody detects endogenous levels of EPB41 only when phosphorylated at tyrosine 660/418.
Protein Families:	Druggable Genome
Protein Pathways:	Tight junction



[View online »](#)

Product images:



Western blot analysis of extracts from HepG2 cells, treated with PMA (125ng/ml, 30mins), using EPB41 (Phospho-Tyr660/418) antibody. The lane on the right is treated with the synthesized peptide.