

## Product datasheet for TA313820

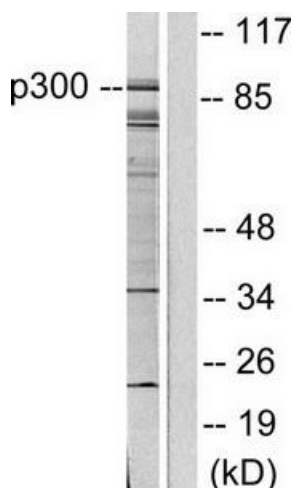
### EP300 Rabbit Polyclonal Antibody

#### Product data:

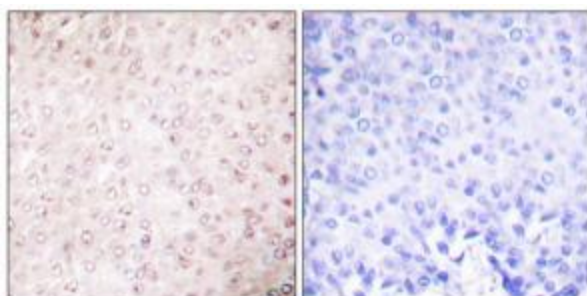
Product Type:	Primary Antibodies
Applications:	IHC, WB
Recommended Dilution:	WB: 1:500~1:3000, IHC: 1:50~1:100, ELISA: 1: 10000
Reactivity:	Human, Mouse, Rat
Host:	Rabbit
Isotype:	IgG
Clonality:	Polyclonal
Immunogen:	The antiserum was produced against synthesized peptide derived from human P300/CBP.
Formulation:	Phosphate buffered saline (without Mg <sup>2+</sup> and Ca <sup>2+</sup> ), pH 7.4, 150mM NaCl, 0.02% sodium azide and 50% glycerol.
Concentration:	lot specific
Purification:	The antibody was affinity-purified from rabbit antiserum by affinity-chromatography using epitope-specific immunogen.
Conjugation:	Unconjugated
Storage:	Store at -20°C as received.
Stability:	Stable for 12 months from date of receipt.
Gene Name:	E1A binding protein p300
Database Link:	<a href="#">NP_001420</a> <a href="#">Entrez Gene 328572 Mouse</a> <a href="#">Entrez Gene 170915 Rat</a> <a href="#">Entrez Gene 2033 Human</a> <a href="#">Q09472</a>
Synonyms:	KAT3B; p300; RSTS2
Note:	P300/CBP antibody detects endogenous levels of total P300/CBP protein.
Protein Families:	Druggable Genome, Transcription Factors
Protein Pathways:	Adherens junction, Cell cycle, Huntington's disease, Jak-STAT signaling pathway, Long-term potentiation, Melanogenesis, Notch signaling pathway, Pathways in cancer, Prostate cancer, Renal cell carcinoma, TGF-beta signaling pathway, Wnt signaling pathway


[View online »](#)

## Product images:



Western blot analysis of extracts from COLO205 cells, using P300/CBP Antibody (#TA313820). The lane on the right is treated with the synthesized peptide.



Immunohistochemical analysis of paraffin-embedded human breast carcinoma tissue using P300/CBP Antibody (#TA313820). The picture on the right is treated with the synthesized peptide.