

## Product datasheet for **TA313814**

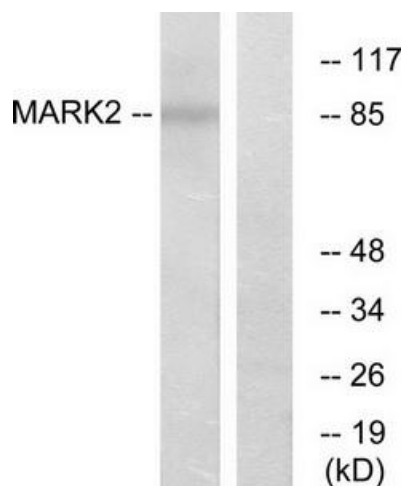
### MARK2 Rabbit Polyclonal Antibody

#### Product data:

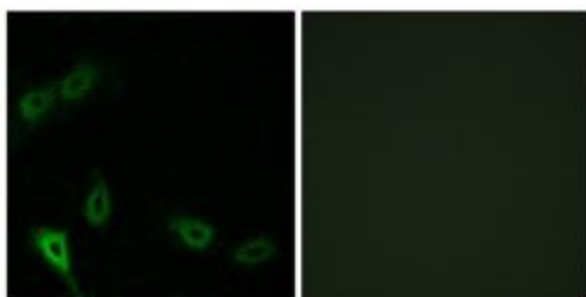
Product Type:	Primary Antibodies
Applications:	IF, WB
Recommended Dilution:	WB: 1:500~1:3000, IF: 1:100~1:500, ELISA: 1:20000
Reactivity:	Human, Mouse, Rat
Host:	Rabbit
Isotype:	IgG
Clonality:	Polyclonal
Immunogen:	The antiserum was produced against synthesized peptide derived from N-terminal of human MARK2.
Formulation:	Phosphate buffered saline (without Mg <sup>2+</sup> and Ca <sup>2+</sup> ), pH 7.4, 150mM NaCl, 0.02% sodium azide and 50% glycerol.
Concentration:	lot specific
Purification:	The antibody was affinity-purified from rabbit antiserum by affinity-chromatography using epitope-specific immunogen.
Conjugation:	Unconjugated
Storage:	Store at -20°C as received.
Stability:	Stable for 12 months from date of receipt.
Database Link:	<a href="#">NP_001034557</a> <a href="#">Entrez Gene 13728 Mouse</a> <a href="#">Entrez Gene 60328 Rat</a>
Synonyms:	ELKL motif kinase 1; EMK1; MAP; MGC99619; microtubule affinity-regulating kinase 2; PAR-1; Par1b; protein-serine; Ser; serine; threonine kinase; Thr protein kinase PAR-1B
Note:	MARK2 antibody detects endogenous levels of total MARK2 protein.
Protein Families:	Druggable Genome, Protein Kinase



[View online »](#)

**Product images:**


Western blot analysis of extracts from COS-7 cells, using MARK2 antibody. The lane on the right is treated with the synthesized peptide.



Immunofluorescence analysis of A549 cells, using MARK2 antibody. The picture on the right is treated with the synthesized peptide.