

## Product datasheet for **TA313811**

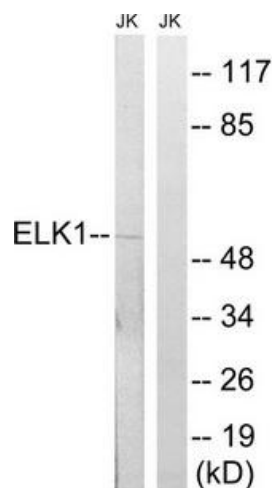
### ELK1 Rabbit Polyclonal Antibody

#### Product data:

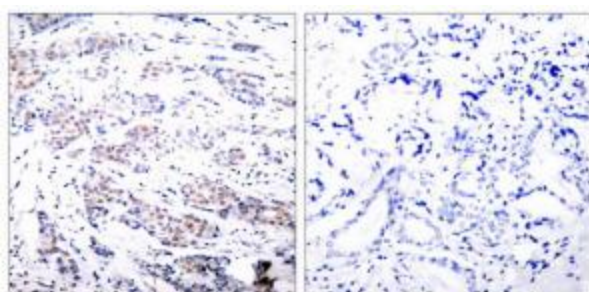
Product Type:	Primary Antibodies
Applications:	IHC, WB
Recommended Dilution:	WB: 1:500~1:3000, IHC: 1:50~1:100, IF: 1:100~1:500, ELISA: 1:10000, IP: Various Dilution
Reactivity:	Human, Mouse, Rat
Host:	Rabbit
Isotype:	IgG
Clonality:	Polyclonal
Immunogen:	This antiserum was produced against synthesized non-phosphopeptide derived from human Elk-1 around the phosphorylation site of Serine 383.
Formulation:	Phosphate buffered saline (without Mg <sup>2+</sup> and Ca <sup>2+</sup> ), pH 7.4, 150mM NaCl, 0.02% sodium azide and 50% glycerol.
Concentration:	lot specific
Purification:	The antibody was affinity-purified from rabbit antiserum by affinity-chromatography using epitope-specific immunogen.
Conjugation:	Unconjugated
Storage:	Store at -20°C as received.
Stability:	Stable for 12 months from date of receipt.
Gene Name:	ELK1, ETS transcription factor
Database Link:	<a href="#">NP_001107595</a> <a href="#">Entrez Gene 13712 Mouse</a> <a href="#">Entrez Gene 314436 Rat</a> <a href="#">Entrez Gene 2002 Human P19419</a>
Synonyms:	ELK1; ELK1 protein; ETS-like gene 1; member of ETS oncogene family; OTTHUMP00000023224; OTTHUMP00000023225
Note:	Elk-1(Ab-383) Antibody detects endogenous levels of Elk-1 protein around Serine 383.
Protein Families:	Druggable Genome, Transcription Factors
Protein Pathways:	Endometrial cancer, ErbB signaling pathway, Focal adhesion, GnRH signaling pathway, Insulin signaling pathway, MAPK signaling pathway, Prion diseases



[View online »](#)

**Product images:**

Western blot analysis of extracts from Jurkat cells, using Elk1 (Ab-383) Antibody. The lane on the right is treated with the synthesized peptide.



Immunohistochemistry analysis of paraffin-embedded human breast carcinoma tissue, using Elk1 (Ab-383) Antibody. The picture on the right is treated with the synthesized peptide.